

# REGISTRATION





# WELCOME Public Meeting #2

October 9, 2024

WILMINGTON-PEOTONE PLANNING AND ENVIRONMENTAL LINKAGES (PEL) STUDY

WILMINGTON PEOTONE  
PEL Study





# WELCOME

## Public Meeting #2

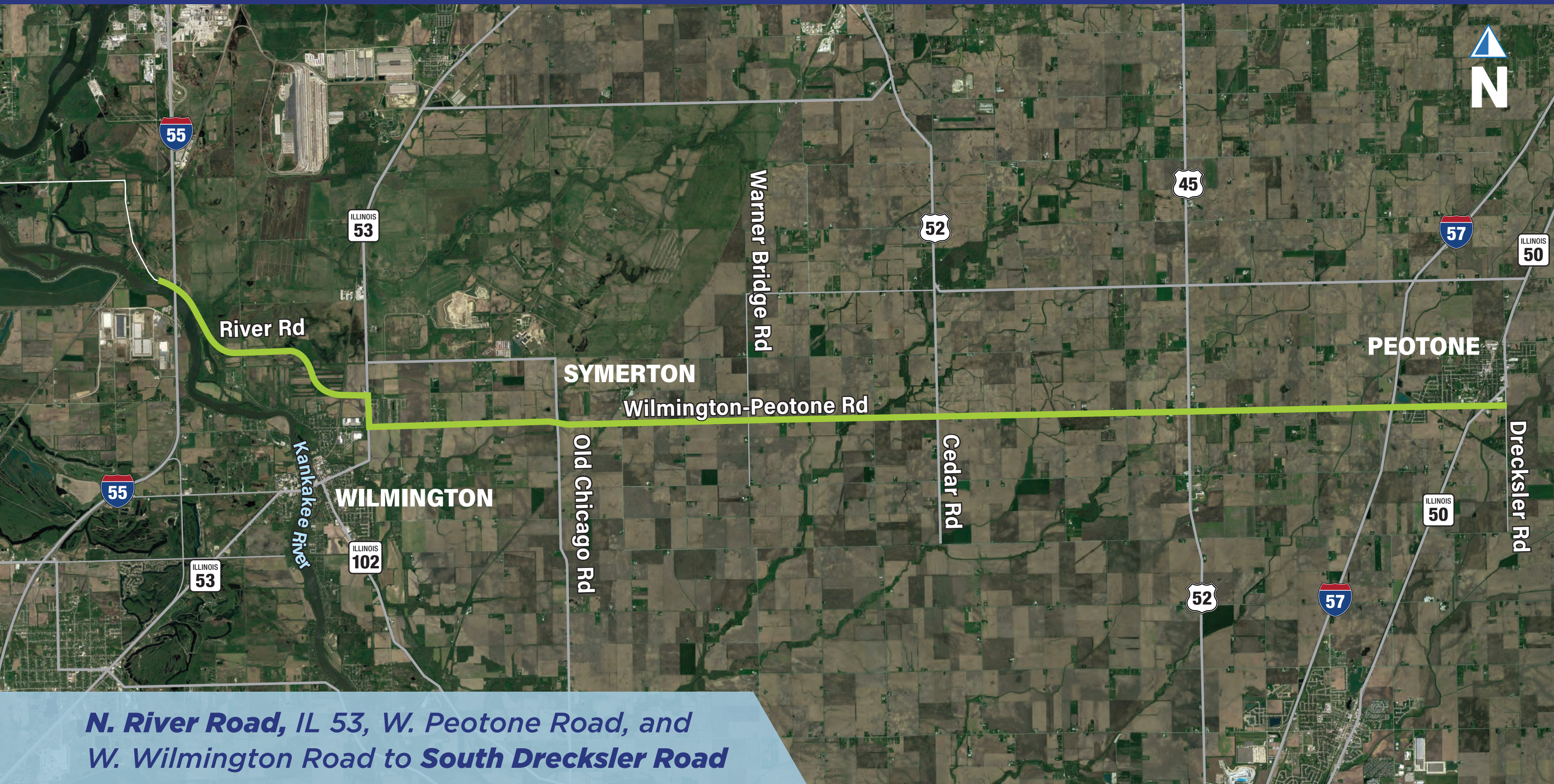
October 16, 2024

WILMINGTON-PEOTONE PLANNING AND ENVIRONMENTAL LINKAGES (PEL) STUDY

WILMINGTON PEOTONE  
PEL Study

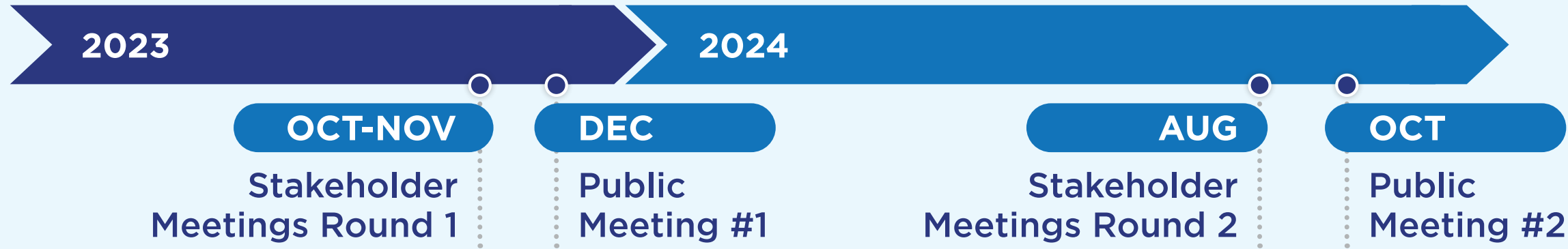


# Location Map



***N. River Road, IL 53, W. Peotone Road, and  
W. Wilmington Road to South Drecklesler Road***

# Public Engagement Summary



## PUBLIC SURVEY RESULTS

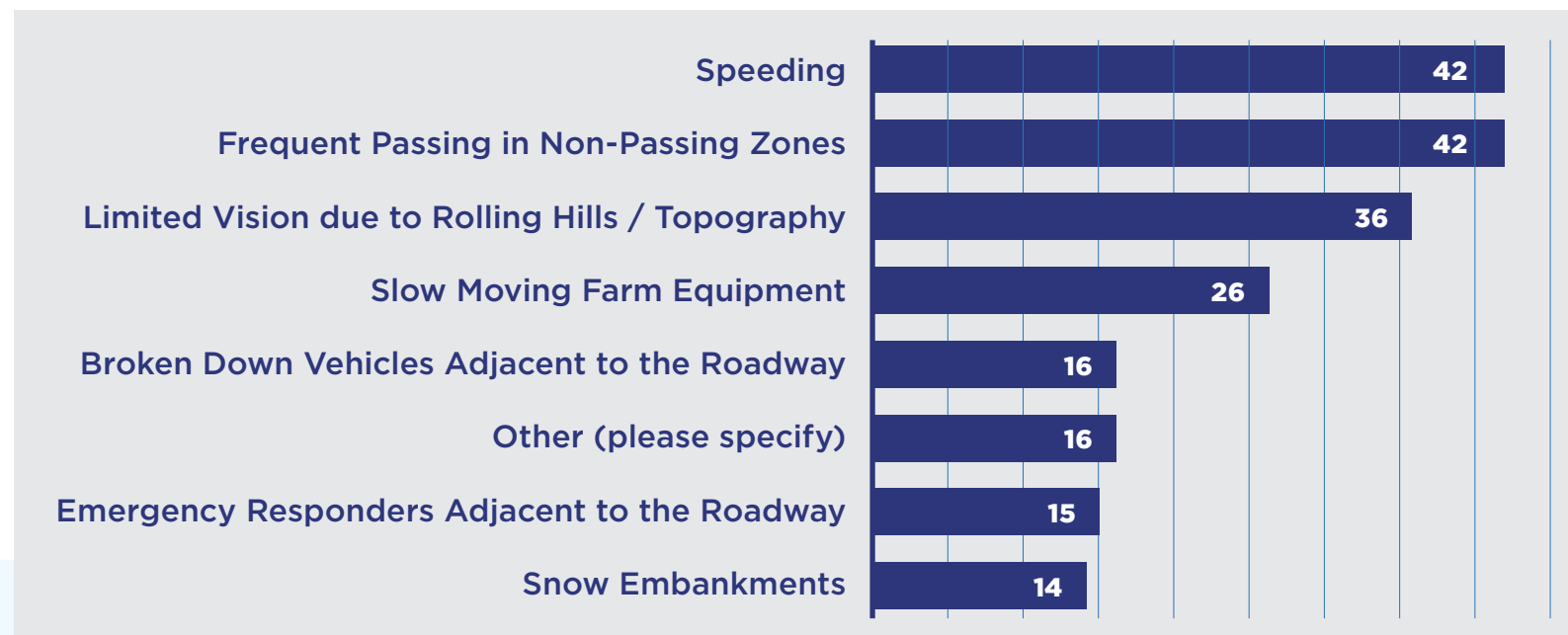
**?** Provide input regarding your experience while traveling River Road/Wilmington-Peotone Road between Interstate 55 and Dreckler Road.



**THE MAJORITY OF RESPONSES 80%**

indicated that there are concerns about this corridor and improvements are needed now.

**?** Safety concerns identified along the corridor at Public Meeting #1



### TOPICS CONSIDERED WHEN DEVELOPING ALTERNATIVES:

- Intersection Safety
- Increase in Truck Traffic
- Speeding
- Alternate roadway alignments
- Typical section
- Farmland access
- Drainage concerns





# Project Purpose and Need

## PURPOSE

-  Improve safety
-  Enhance mobility for all users through providing an efficient east-west connection
-  Support current and future travel demand throughout the corridor

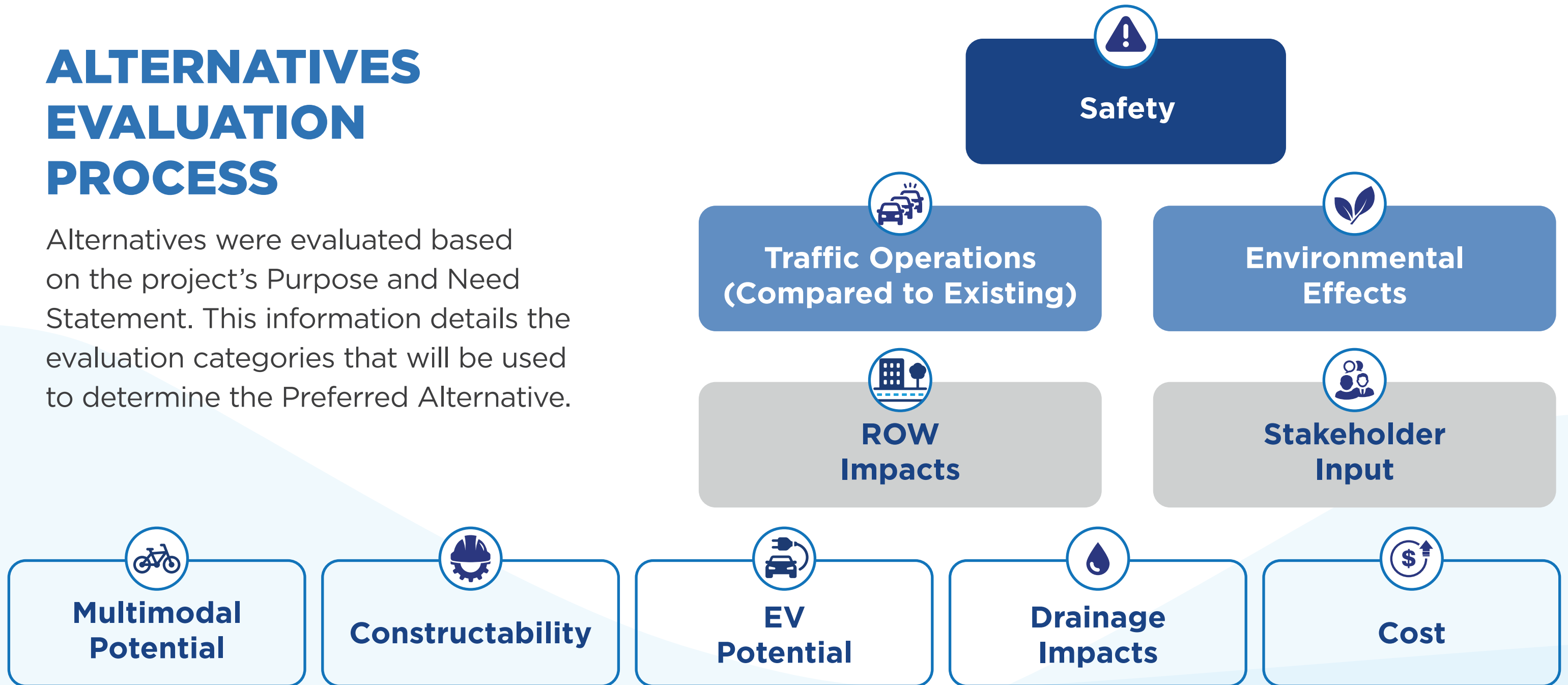
## NEED

-  Address deficiencies in the existing roadway and multimodal infrastructure
-  Accommodate growth in local and regional traffic to improve mobility throughout the county

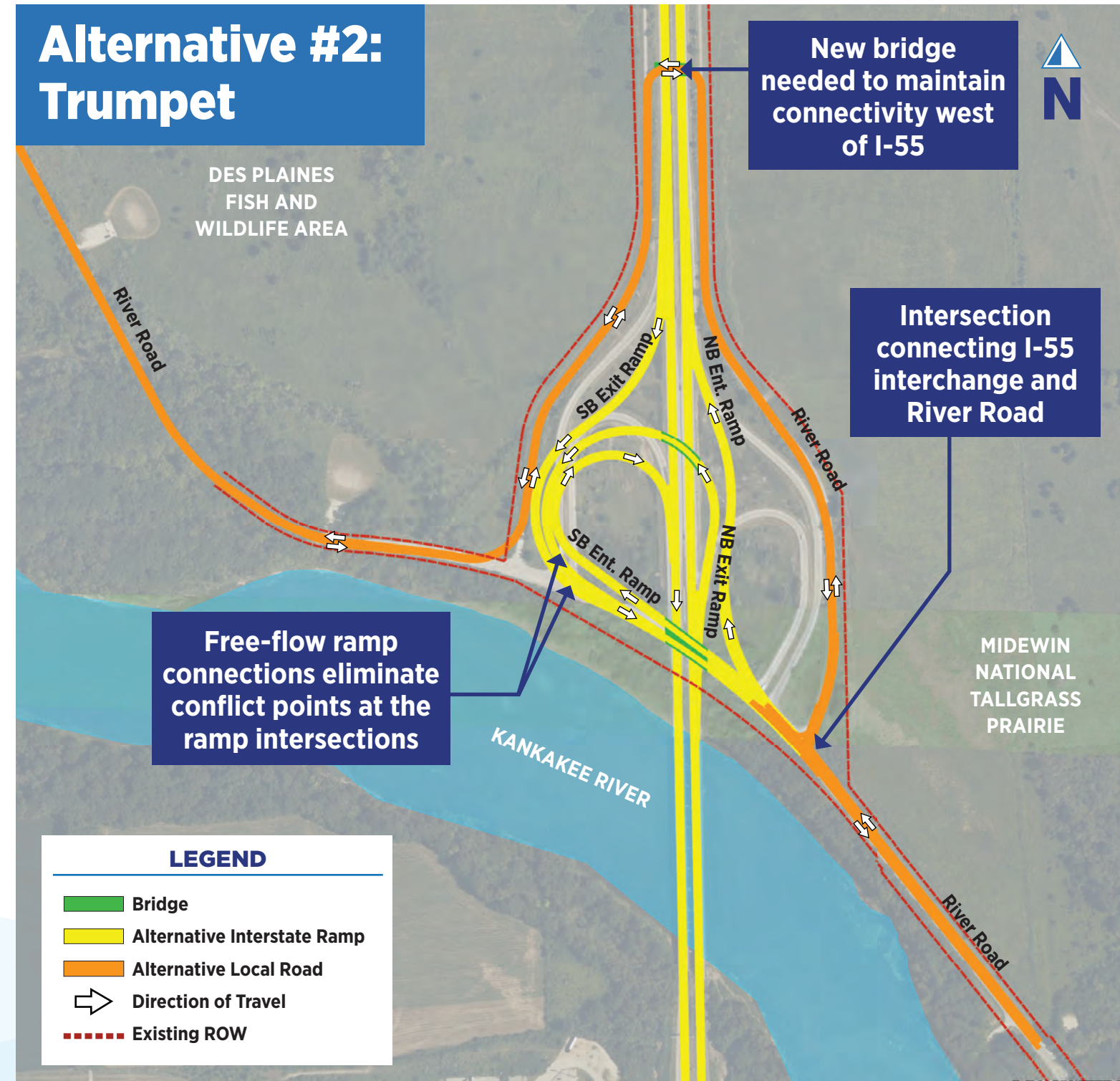
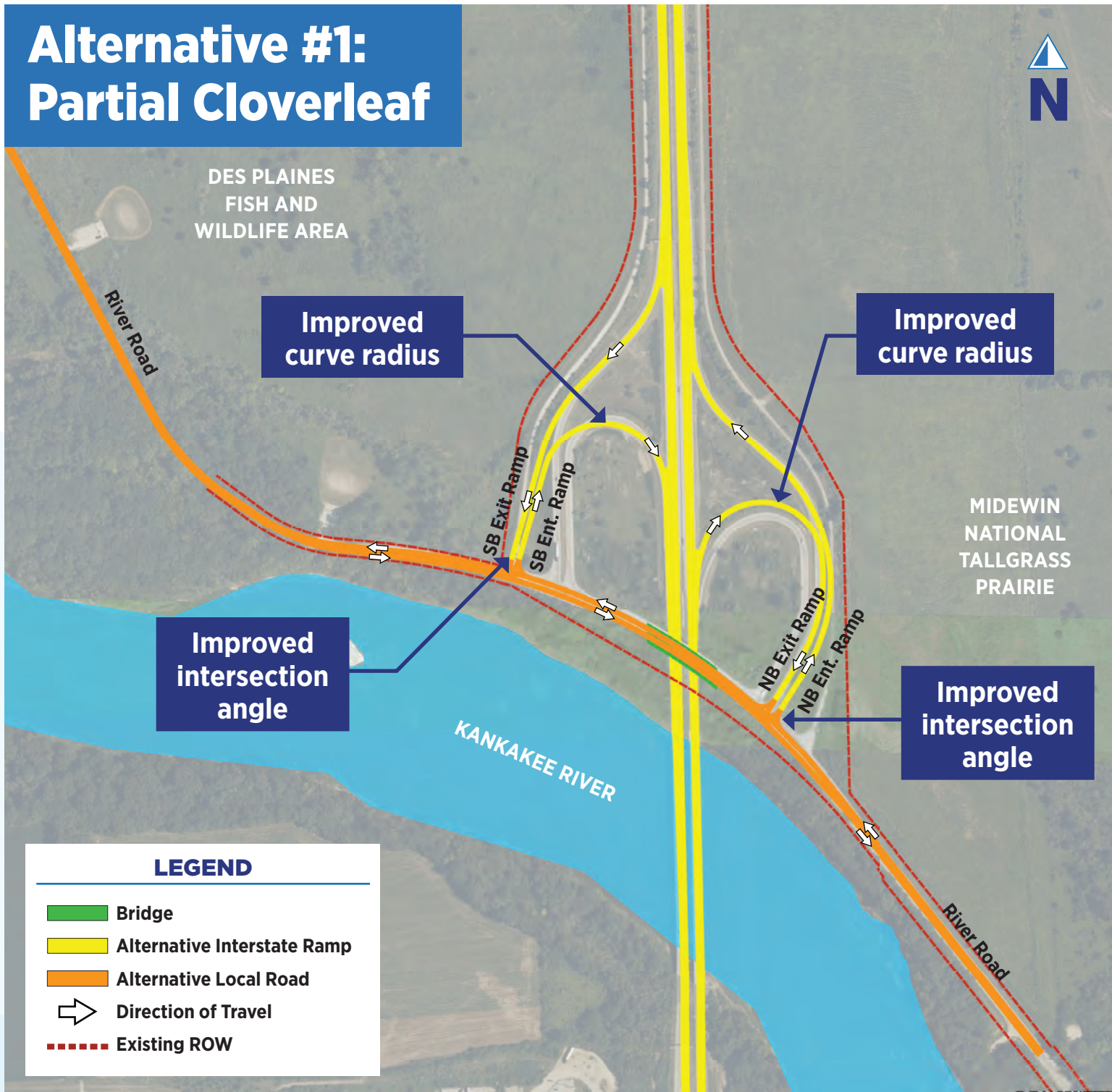
# Evaluation Criteria

## ALTERNATIVES EVALUATION PROCESS

Alternatives were evaluated based on the project's Purpose and Need Statement. This information details the evaluation categories that will be used to determine the Preferred Alternative.



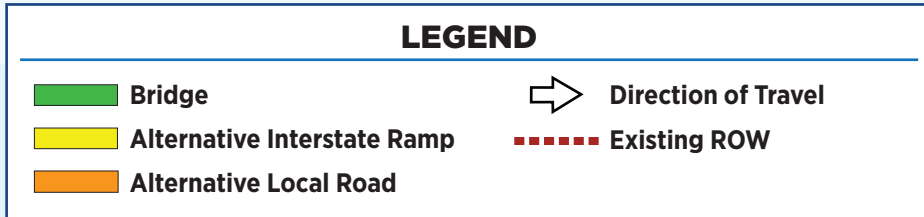
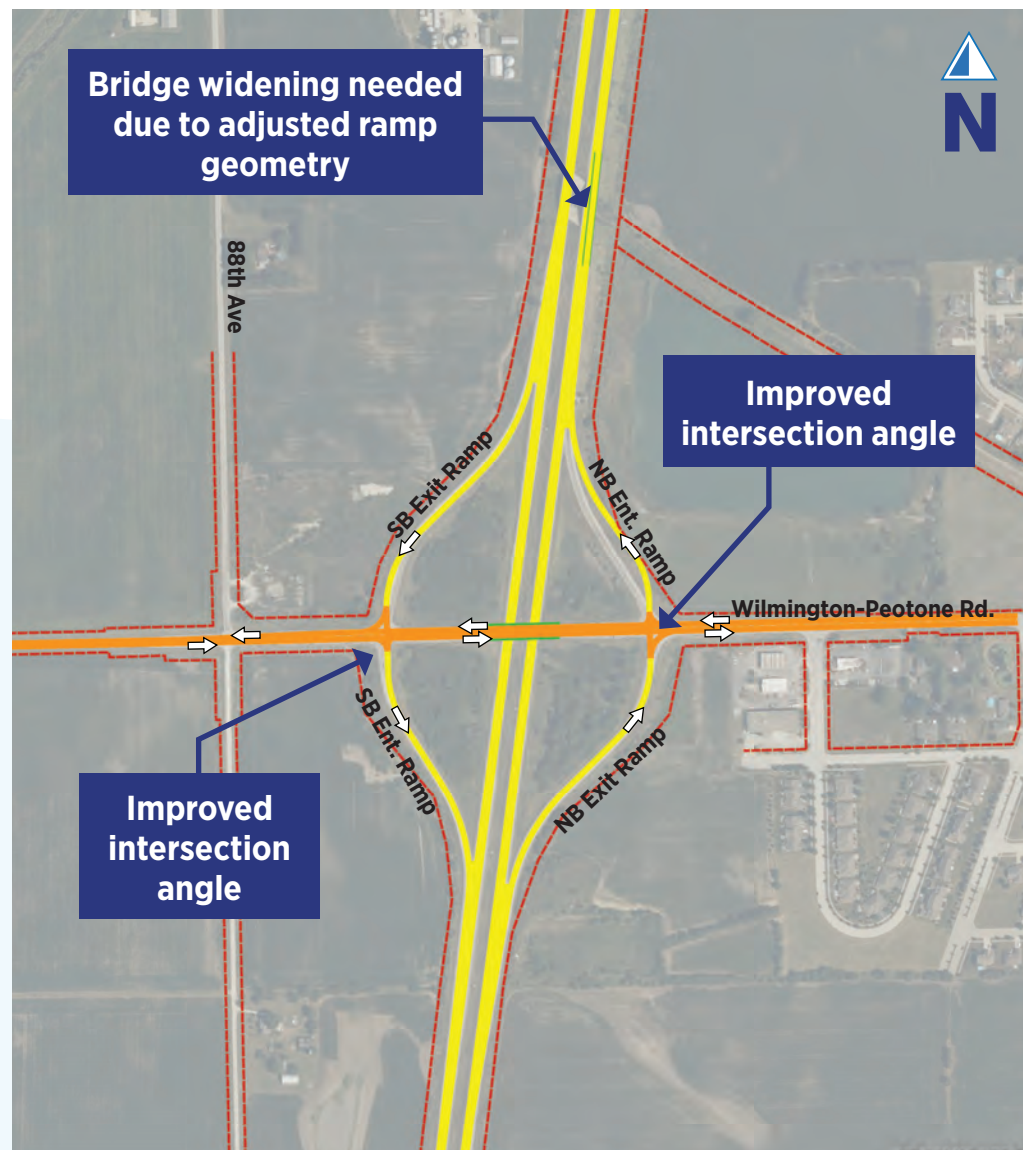
# I-55 Interchange: Alternatives



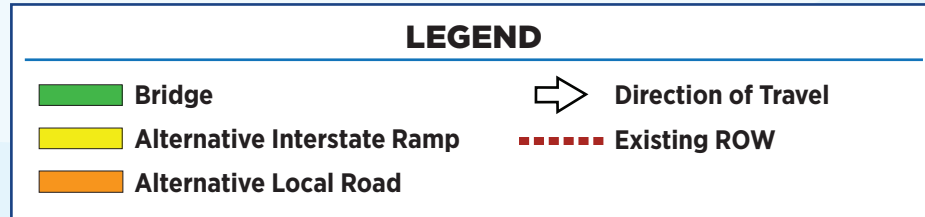
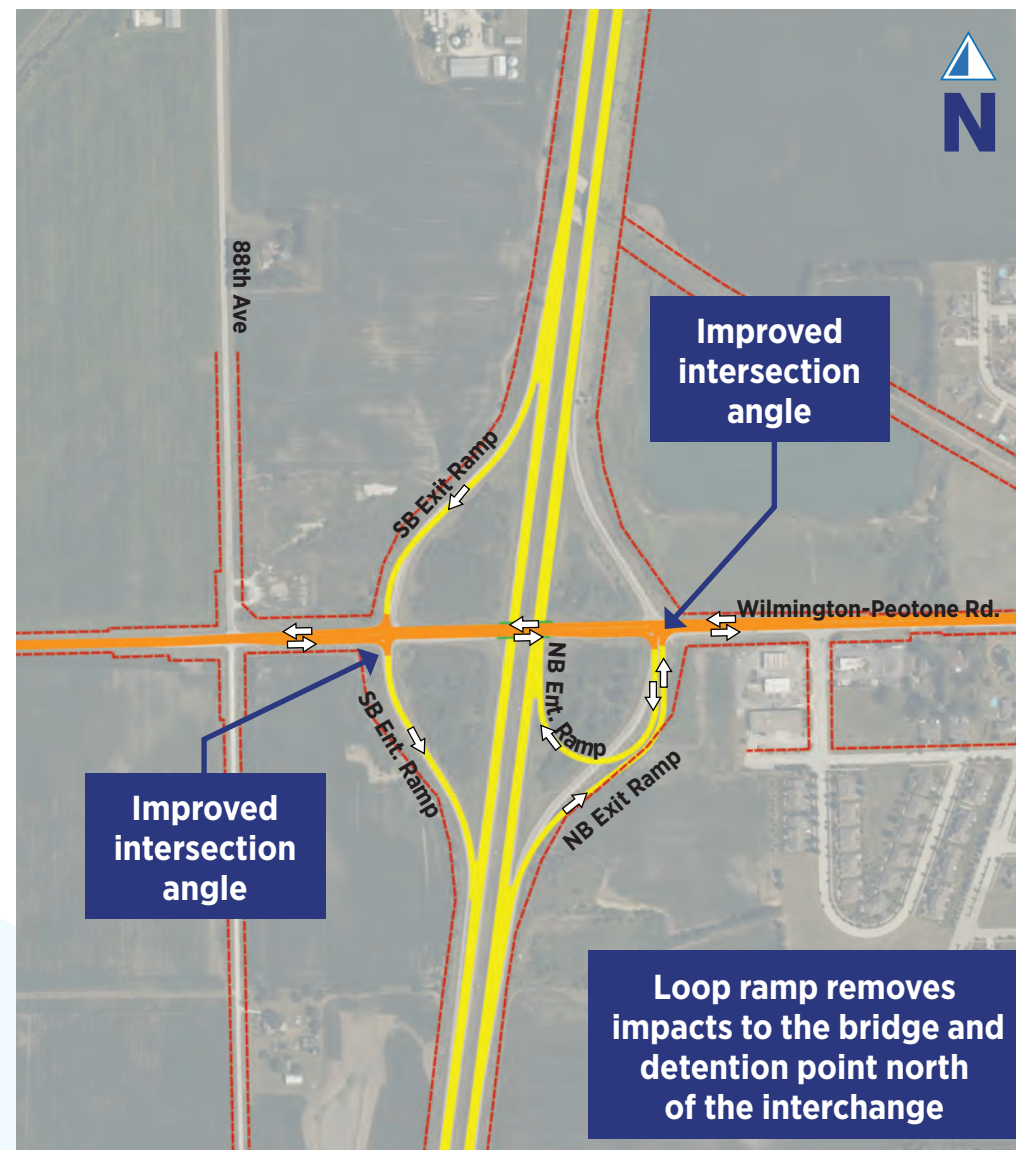


# I-57 Interchange: Alternatives

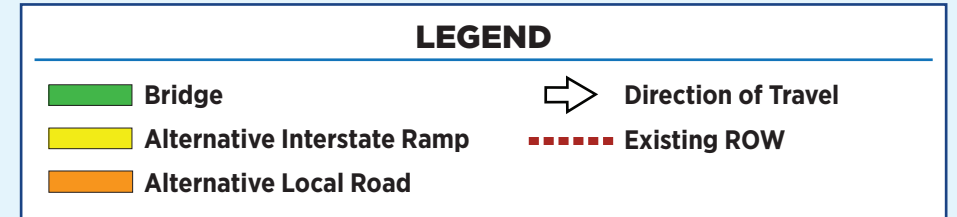
## Alternative #1: Diamond



## Alternative #2: Partial Cloverleaf



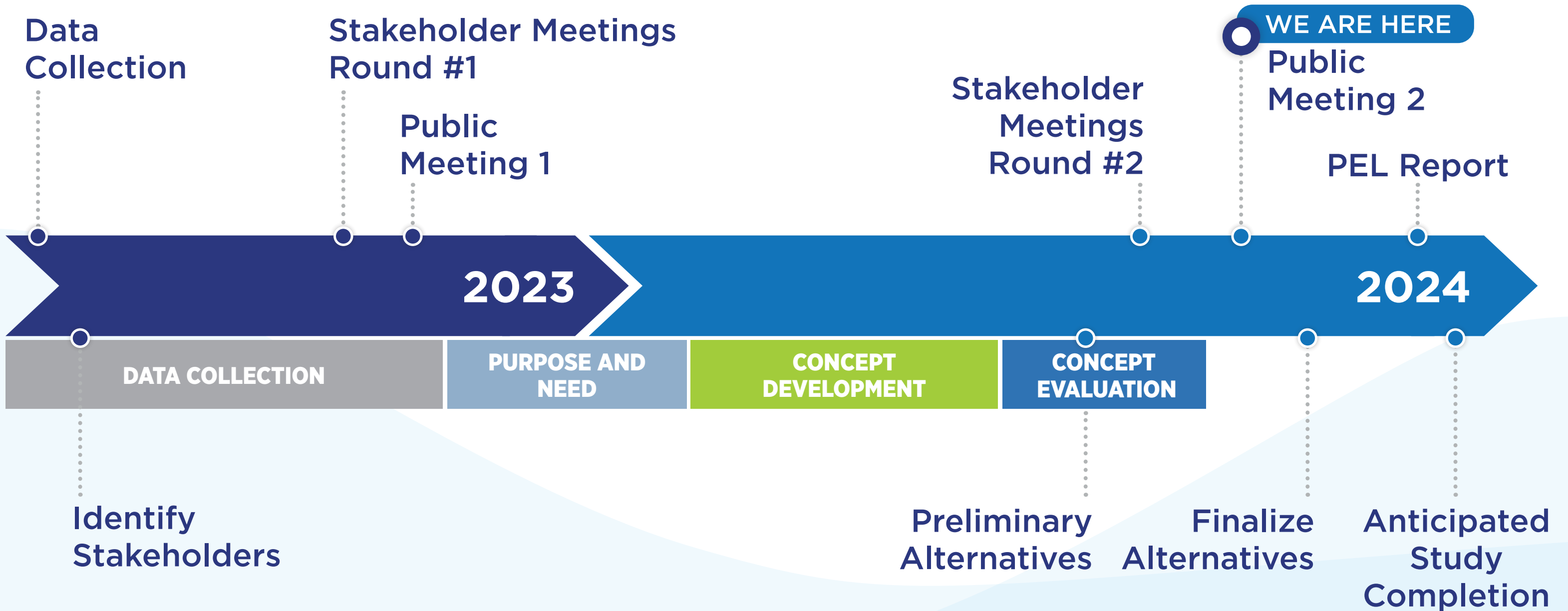
## Alternative #3: Diverging Diamond



# Project Development Process



# PEL Study



# Comments and Survey



COMMENTS DUE BY  
NOVEMBER 6, 2024



COMMENT  
FORM



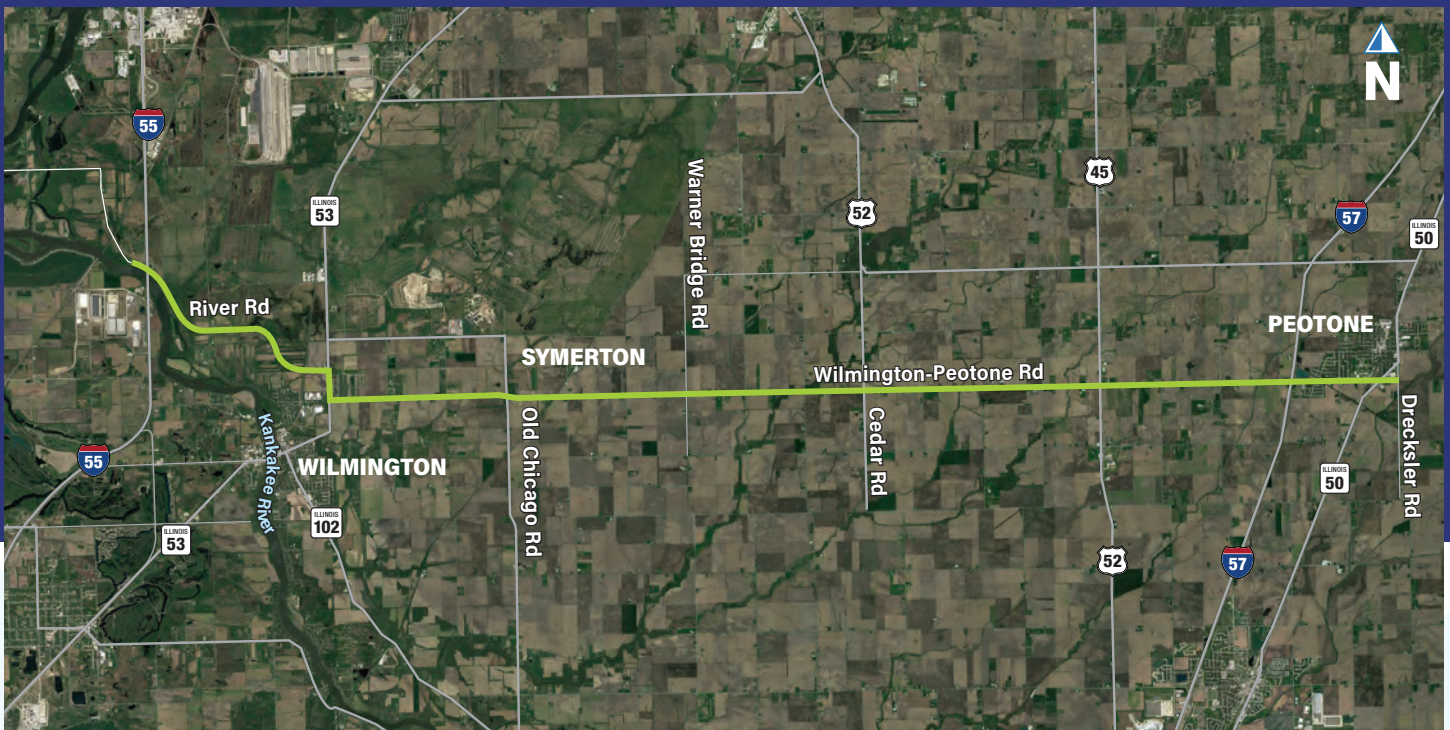
WEBSITE

[WWW.WILMINGTONPEOTONESTUDY.COM](http://WWW.WILMINGTONPEOTONESTUDY.COM)



# PUBLIC MEETING #2

Thank you for joining us for the Wilmington-Peotone PEL Study Public Meeting #2. The Will County Division of Transportation (WCDOT) is performing a Planning and Environmental Linkages (PEL) study over approximately 22 miles along Wilmington-Peotone Road between Interstate 55 and Dreckler Road.



Based on your feedback and the data collection presented at Public Meeting #1 held in December of 2023, the Purpose and Need statement has been developed which will be used to identify the alternative that best meets the unique needs of the Wilmington-Peotone corridor. The Purpose and Need of the Wilmington-Peotone PEL study is:

## Purpose

- ✓ Improve safety
- ✓ Enhance mobility for all users through providing an efficient east-west connection
- ✓ Support current and future travel demand throughout the corridor

## Need

- ✓ Address deficiencies in the existing roadway and multi modal infrastructure
- ✓ Accommodate growth in local and regional traffic to improve mobility throughout the county

# Alternative Evaluation

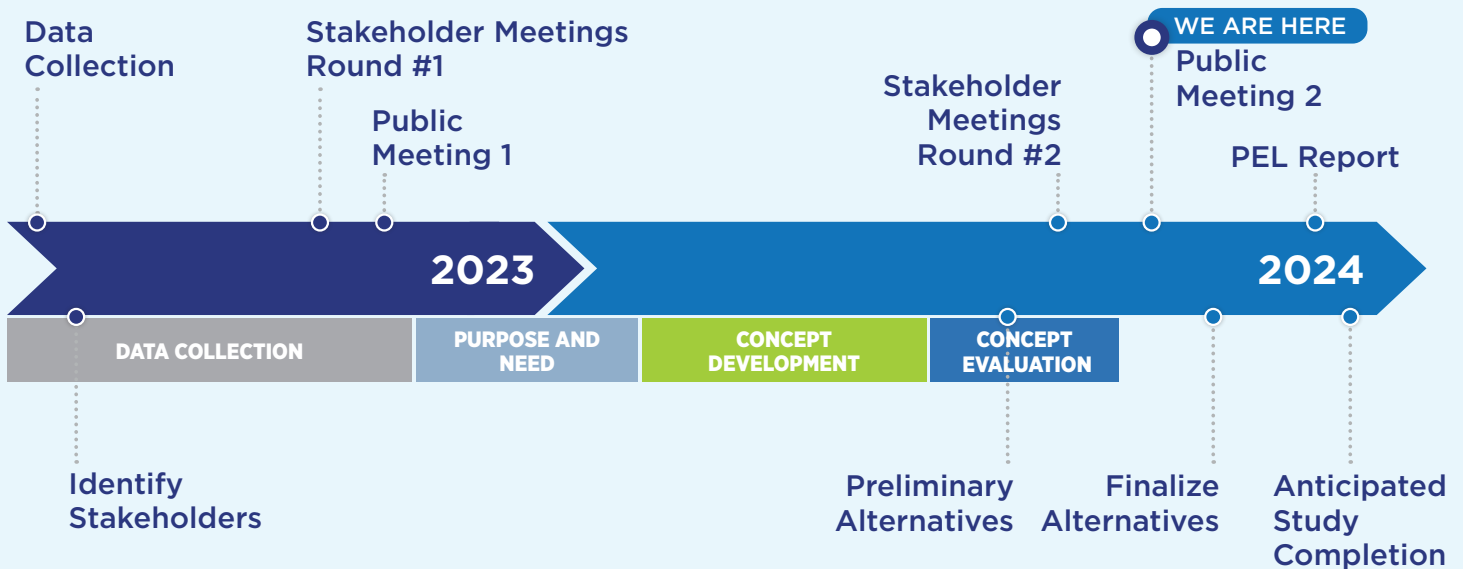
Using the Purpose and Need statement as a guide, Concept Alternatives have been developed showing potential improvements to address the concerns along the corridor. Improvements are broken up in to three categories:

- **SEGMENT IMPROVEMENTS:** Longitudinal improvements along the corridor to the typical sections, alignment, and/or profile
- **INTERSECTION IMPROVEMENTS:** Spot improvements at intersections to improve safety and operations.
- **INTERCHANGE IMPROVEMENTS:** Alternative to address the deficiencies at the existing I-55 and I-57 interchanges.



**ACCESS**  
**PUBLIC MEETING EXHIBITS**  
 showing the concept alternatives here

# Project Schedule



**YOUR INPUT IS IMPORTANT**

We want to hear from you!

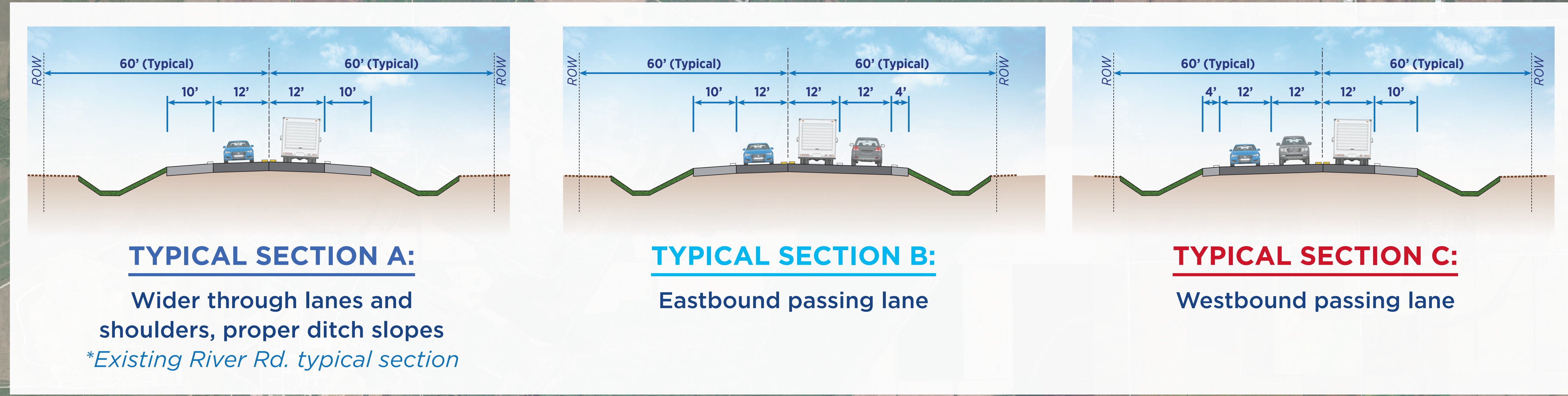


**TAKE THE PUBLIC MEETING # 2 SURVEY**



If you have questions regarding this project, please contact **Christina Kupkowski** by phone at (815) 727-8476 or email at [ckupkowski@willcountyillinois.com](mailto:ckupkowski@willcountyillinois.com)

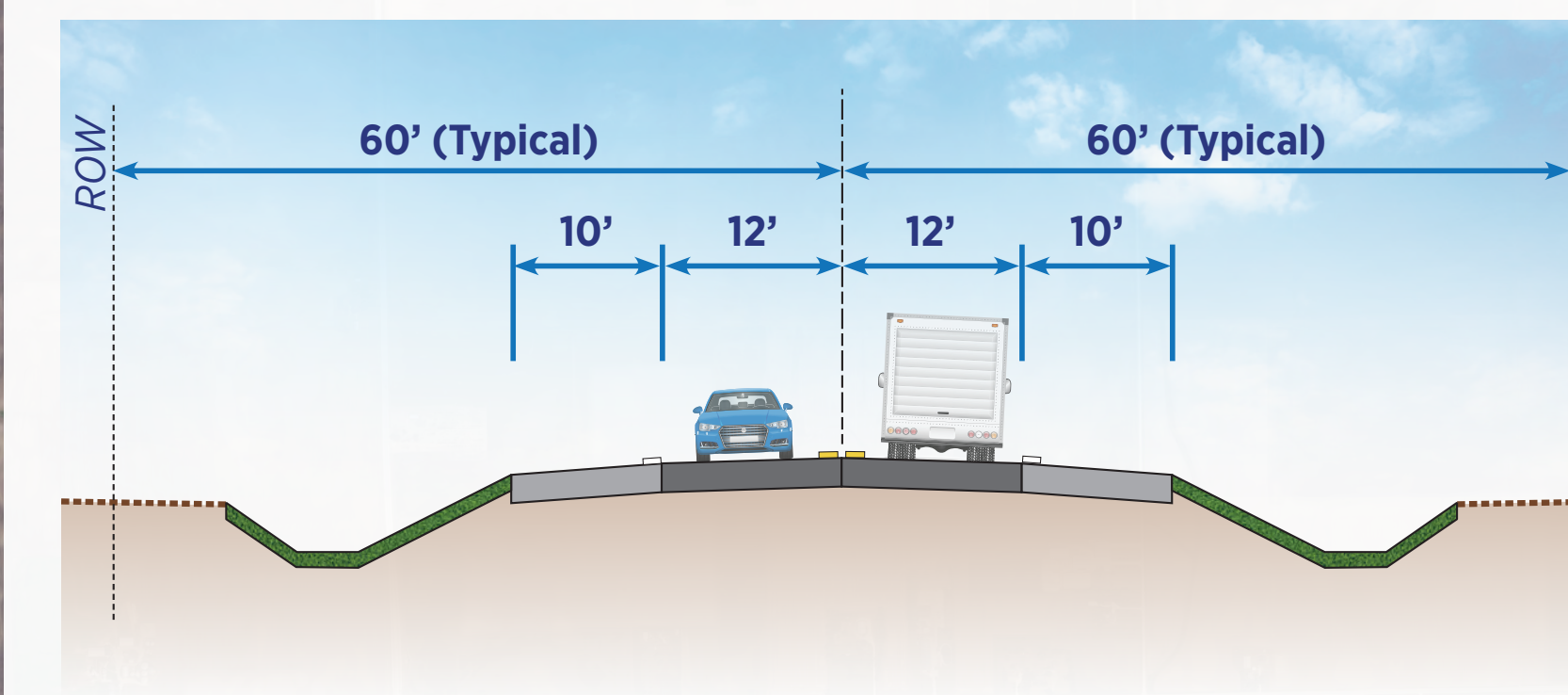
# CONCEPTUAL EXHIBIT: SEGMENTS



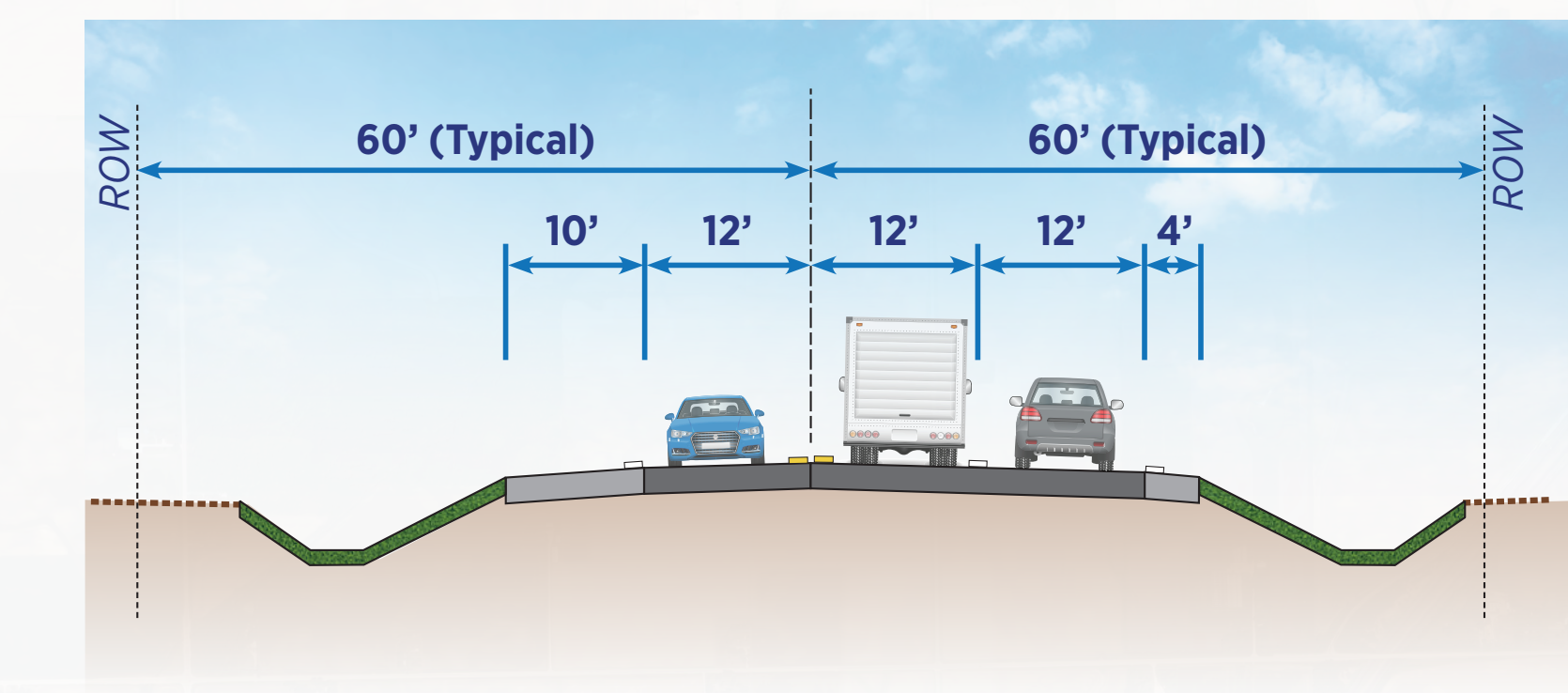
**LEGEND**

- Wilmington-Peotone PEL Study Corridor
- Corridor Realignment (Typical Section A)
- Bridge
- Standard Cross Section (Typical Section A)
- Passing lane (Typical Section B & C)
- Profile Improvement
- Railroad Grade Separation

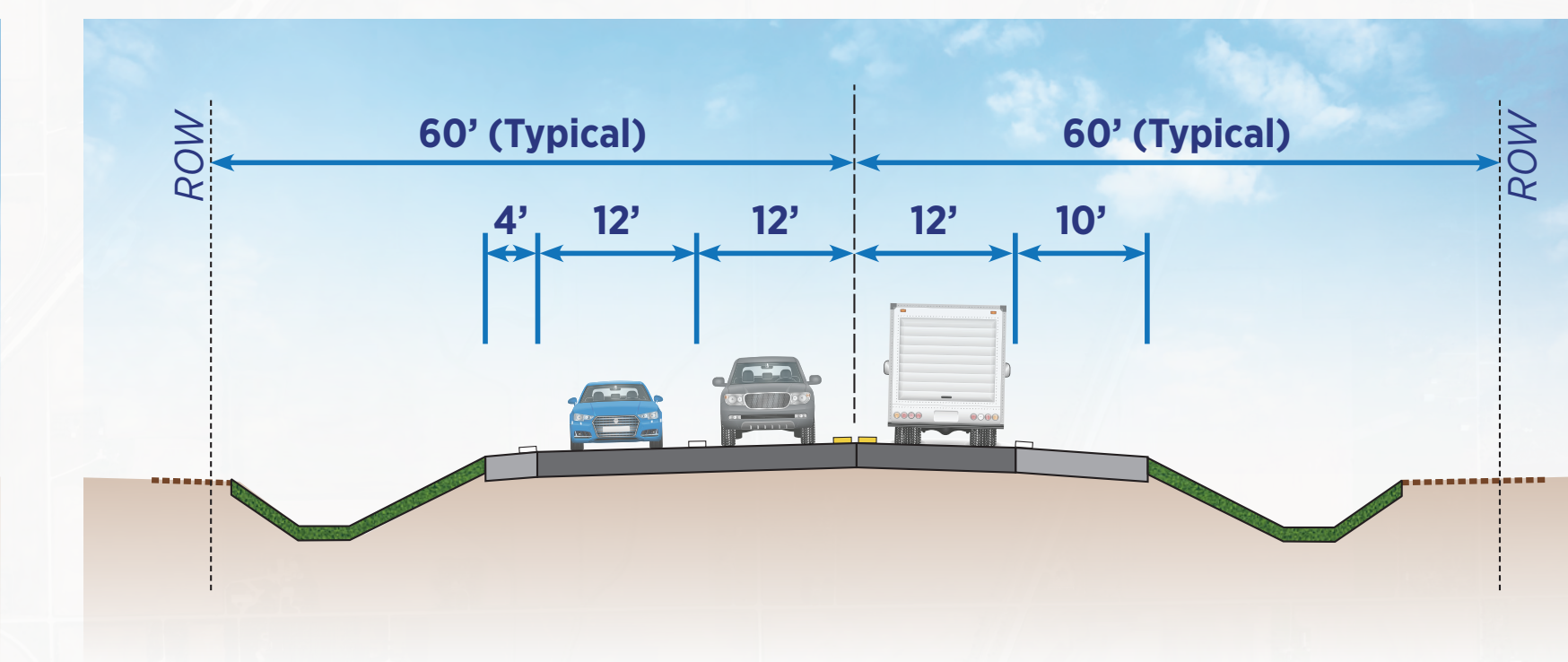
# CONCEPTUAL EXHIBIT: SEGMENTS



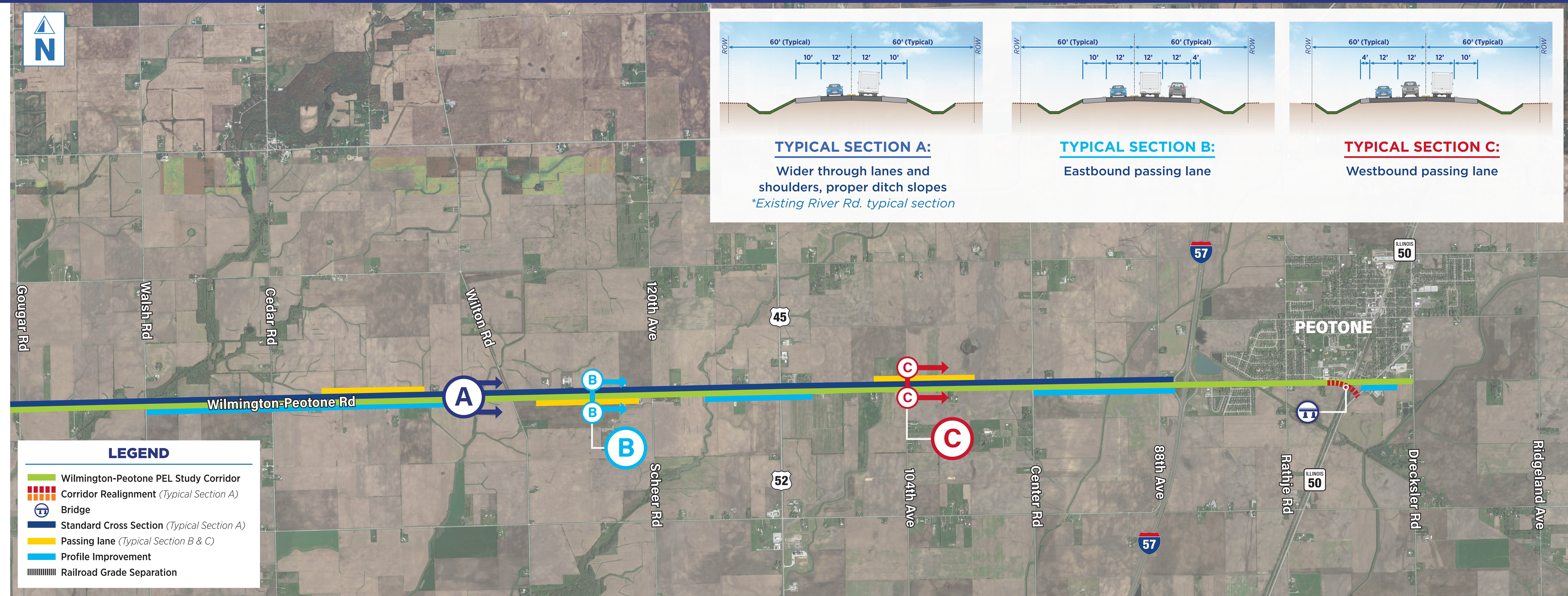
**TYPICAL SECTION A:**  
Wider through lanes and shoulders, proper ditch slopes  
*\*Existing River Rd. typical section*



**TYPICAL SECTION B:**  
Eastbound passing lane



**TYPICAL SECTION C:**  
Westbound passing lane



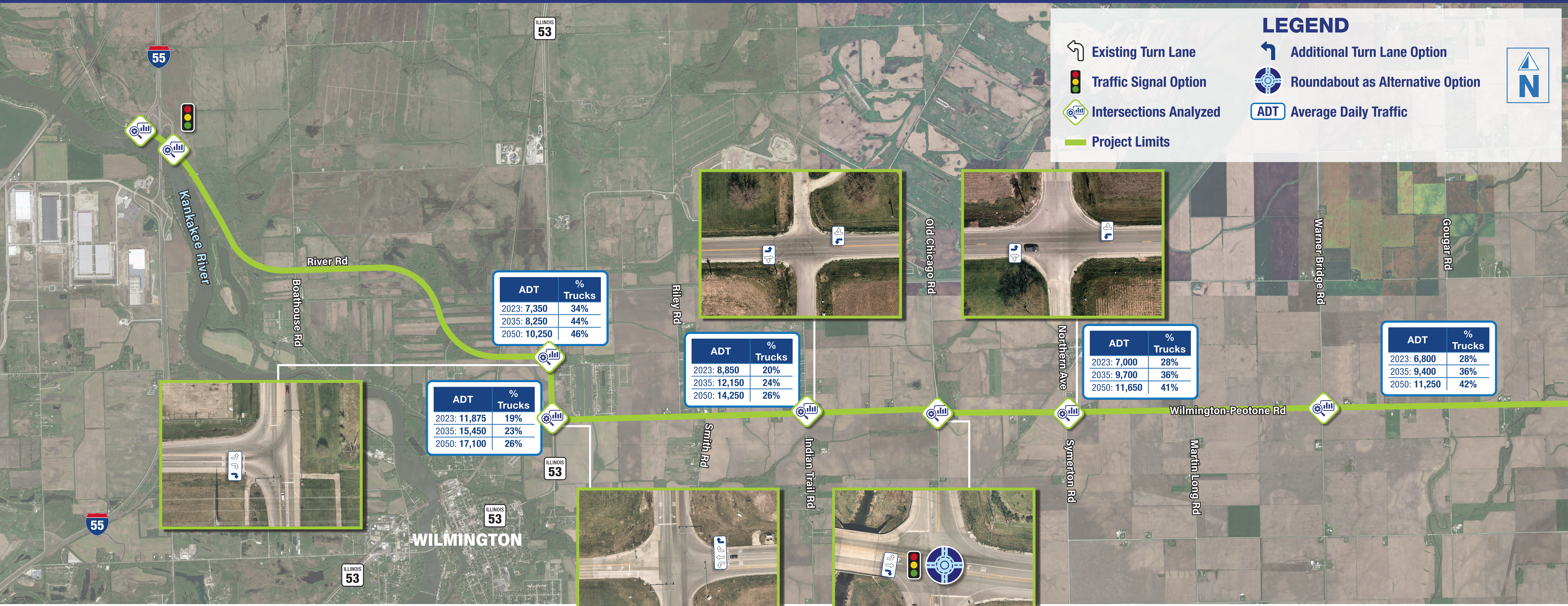
**LEGEND**

- Wilmington-Peotone PEL Study Corridor
- Corridor Realignment (Typical Section A)
- B Bridge
- Standard Cross Section (Typical Section A)
- Passing lane (Typical Section B & C)
- Profile Improvement
- Railroad Grade Separation



### LEGEND

- Existing Turn Lane
- Traffic Signal Option
- Intersections Analyzed
- Project Limits
- Additional Turn Lane Option
- Roundabout as Alternative Option
- Average Daily Traffic

ADT	% Trucks
2023: 7,350	34%
2035: 8,250	44%
2050: 10,250	46%

ADT	% Trucks
2023: 8,850	20%
2035: 12,150	24%
2050: 14,250	26%

ADT	% Trucks
2023: 7,000	28%
2035: 9,700	36%
2050: 11,650	41%

ADT	% Trucks
2023: 6,800	28%
2035: 9,400	36%
2050: 11,250	42%

ADT	% Trucks
2023: 11,875	19%
2035: 15,450	23%
2050: 17,100	26%



### LEGEND

- Existing Turn Lane
- Traffic Signal Option
- Intersections Analyzed
- Project Limits
- Additional Turn Lane Option
- Roundabout as Alternative Option
- ADT Average Daily Traffic
- Crash




ADT	% Trucks
2023: 6,825	29%
2035: 8,820	30%
2050: 9,920	38%

ADT	% Trucks
2023: 5,350	31%
2035: 7,000	33%
2050: 8,075	41%

ADT	% Trucks
2023: 8,800	15%
2035: 10,210	19%
2050: 12,070	17%

Two recent fatal crashes. Additional signage has been added and further evaluation is underway