

REGISTRATION





WELCOME Public Meeting #2

October 9, 2024

WILMINGTON-PEOTONE PLANNING AND ENVIRONMENTAL LINKAGES (PEL) STUDY

WILMINGTON PEOTONE
PEL Study





WELCOME

Public Meeting #2

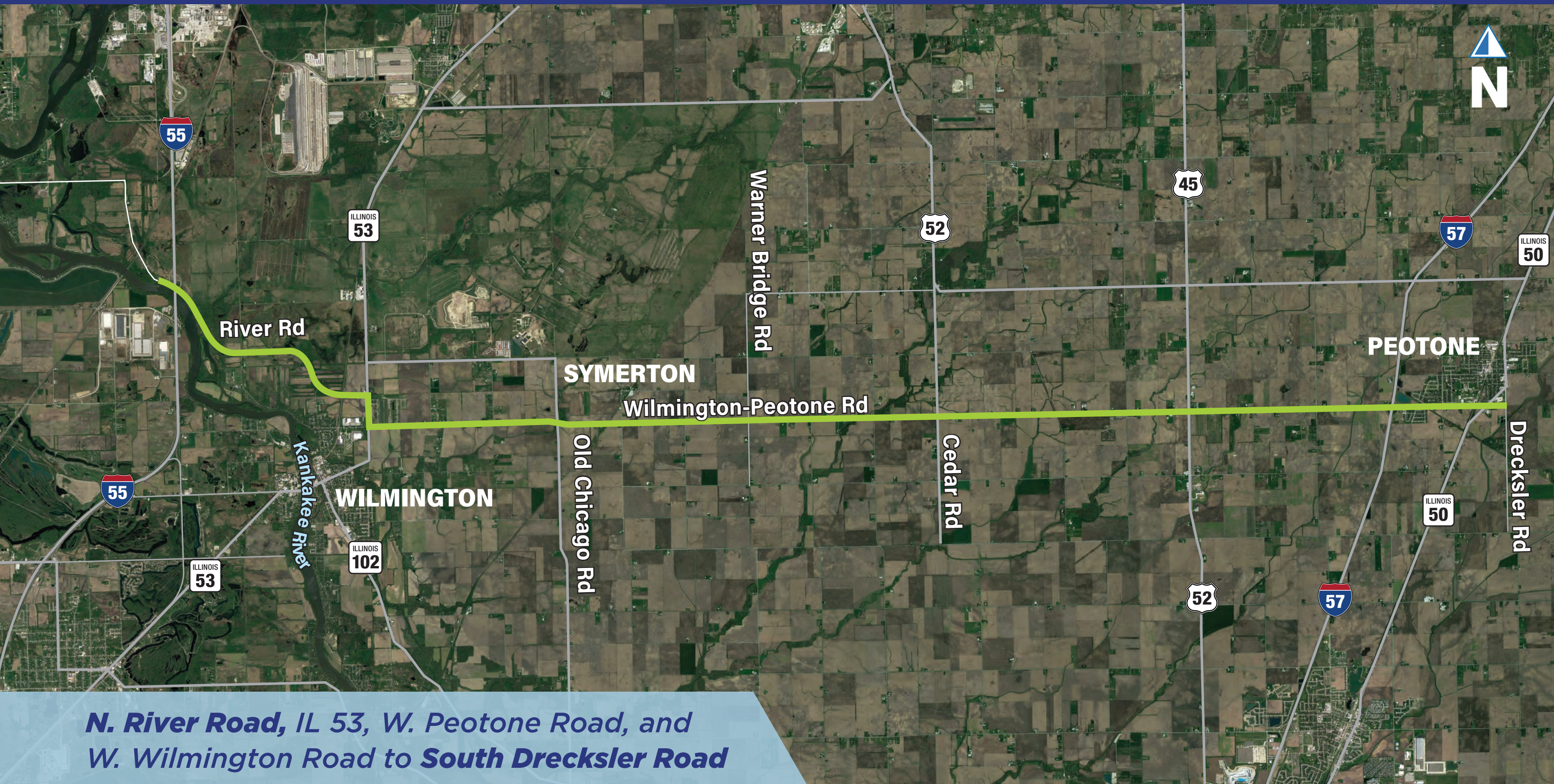
October 16, 2024

WILMINGTON-PEOTONE PLANNING AND ENVIRONMENTAL LINKAGES (PEL) STUDY

WILMINGTON PEOTONE
PEL Study

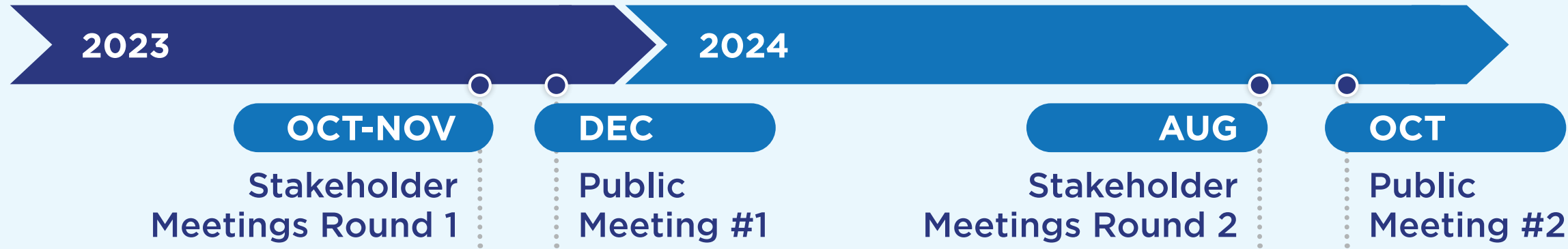


Location Map



***N. River Road, IL 53, W. Peotone Road, and
W. Wilmington Road to South Dreckslar Road***

Public Engagement Summary



PUBLIC SURVEY RESULTS

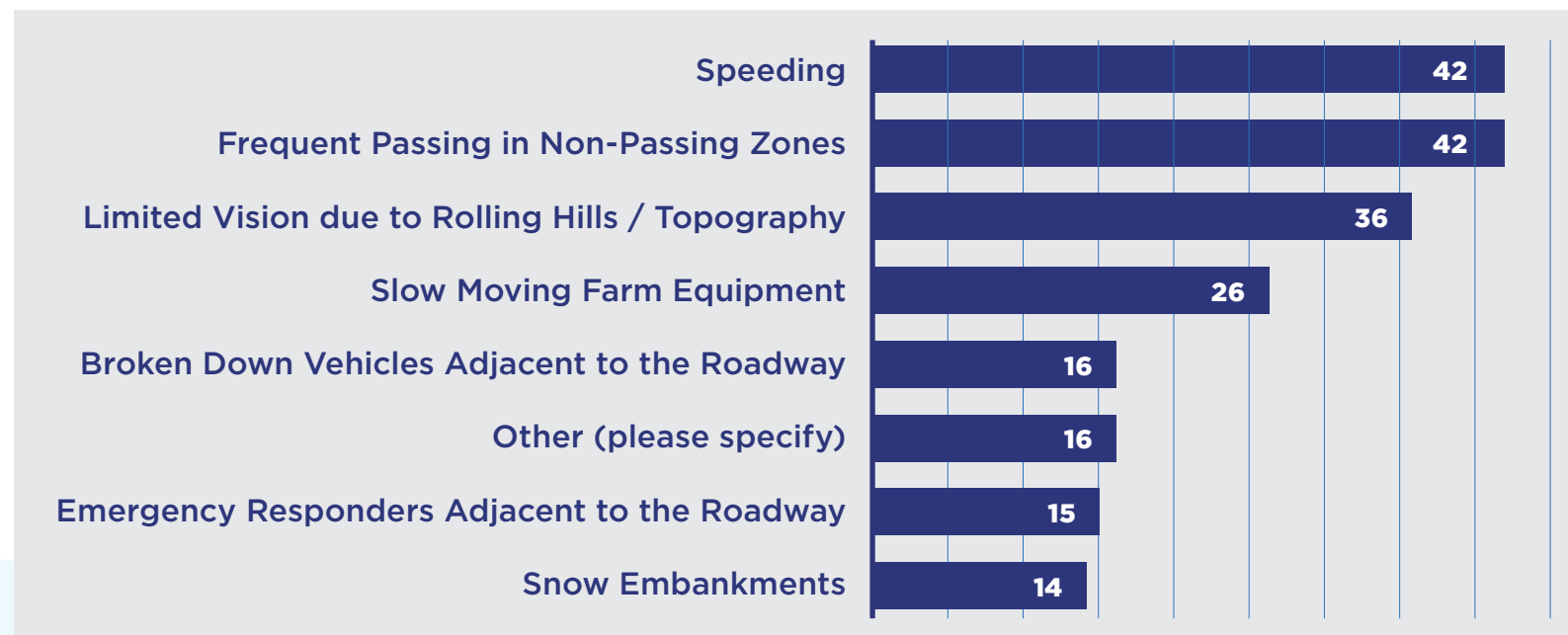
? Provide input regarding your experience while traveling River Road/Wilmington-Peotone Road between Interstate 55 and Dreckler Road.



THE MAJORITY OF RESPONSES 80%

indicated that there are concerns about this corridor and improvements are needed now.

? Safety concerns identified along the corridor at Public Meeting #1



TOPICS CONSIDERED WHEN DEVELOPING ALTERNATIVES:

- Intersection Safety
- Increase in Truck Traffic
- Speeding
- Alternate roadway alignments
- Typical section
- Farmland access
- Drainage concerns





Project Purpose and Need

PURPOSE

-  Improve safety
-  Enhance mobility for all users through providing an efficient east-west connection
-  Support current and future travel demand throughout the corridor

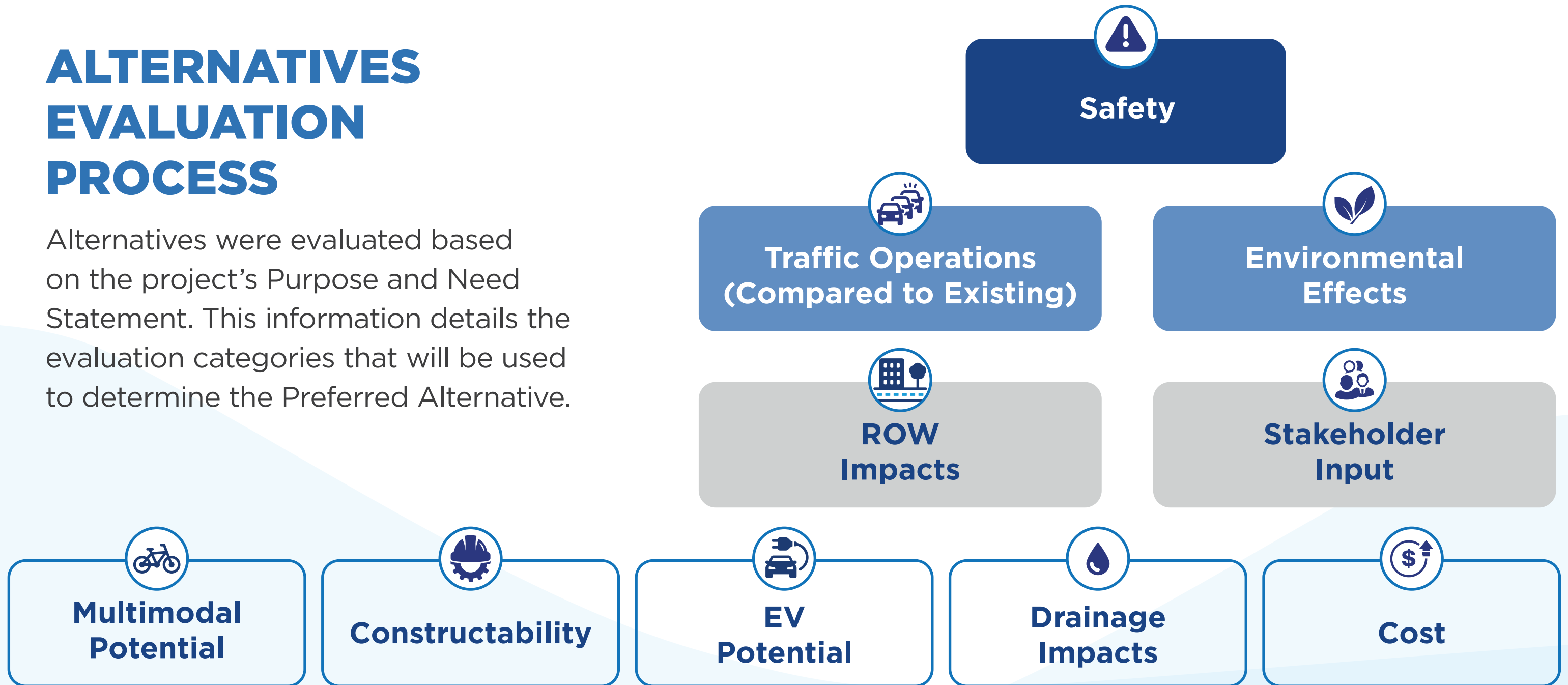
NEED

-  Address deficiencies in the existing roadway and multimodal infrastructure
-  Accommodate growth in local and regional traffic to improve mobility throughout the county

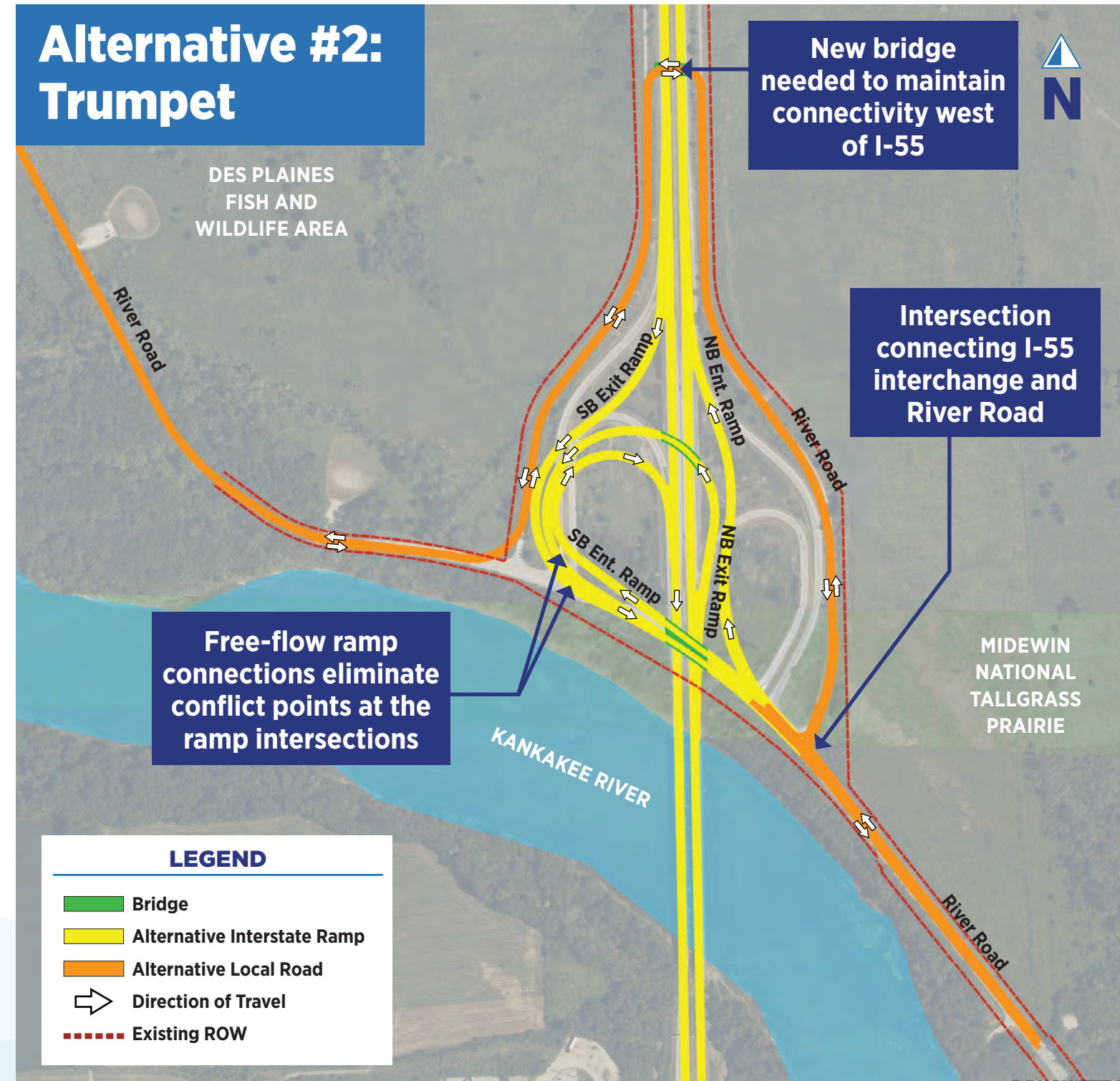
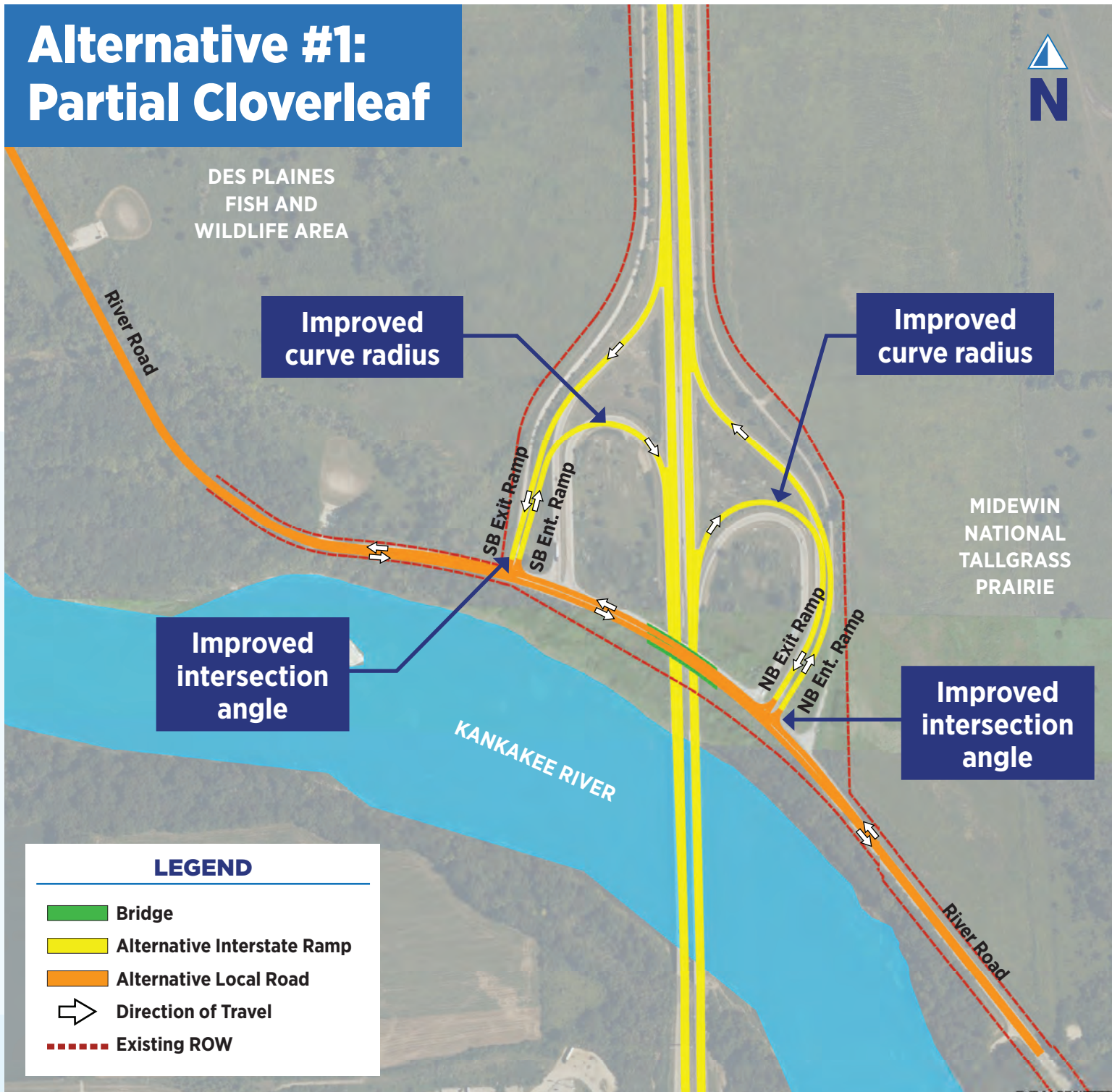
Evaluation Criteria

ALTERNATIVES EVALUATION PROCESS

Alternatives were evaluated based on the project's Purpose and Need Statement. This information details the evaluation categories that will be used to determine the Preferred Alternative.

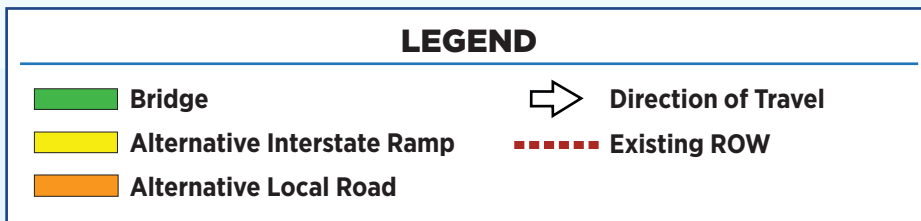
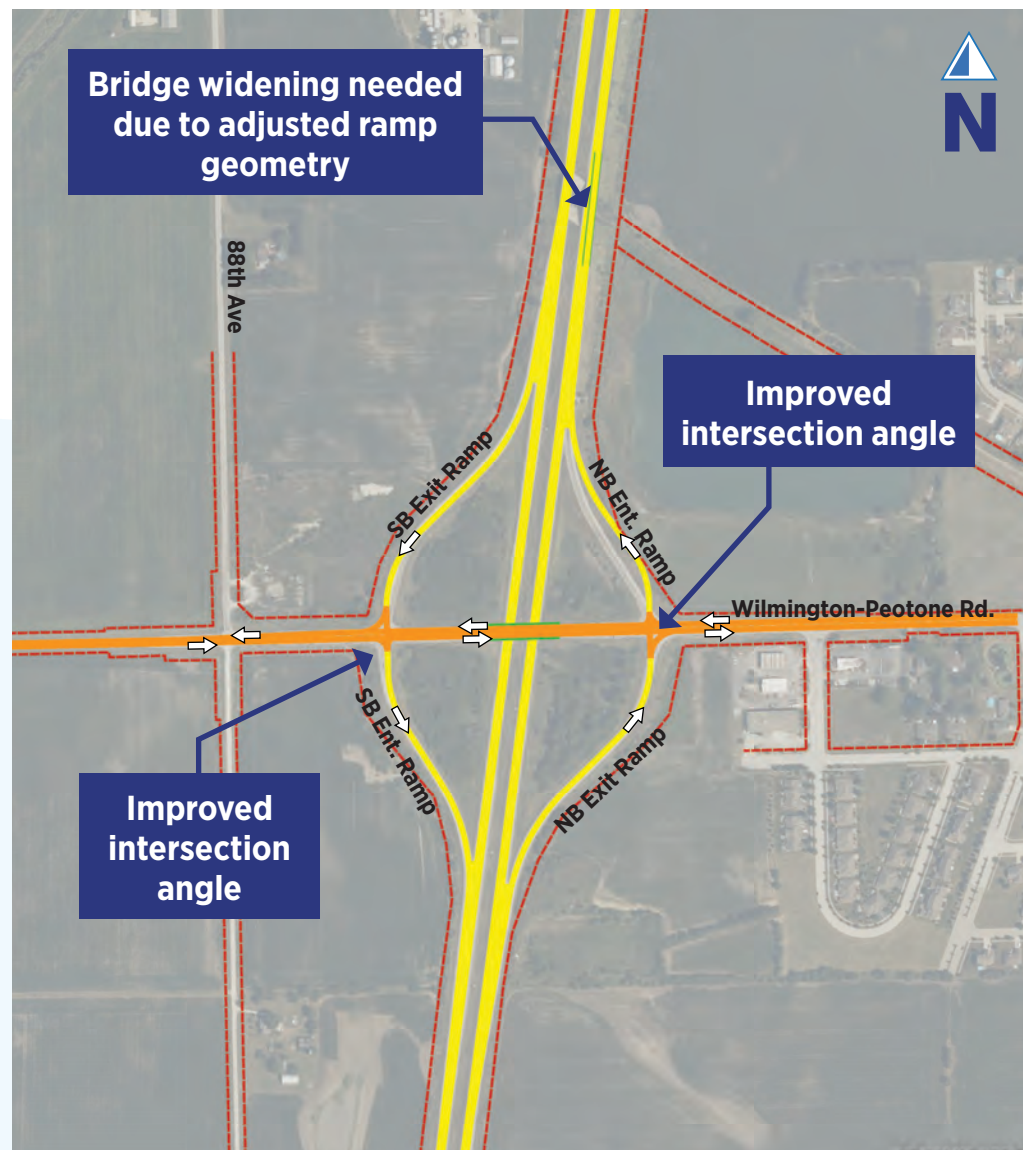


I-55 Interchange: Alternatives

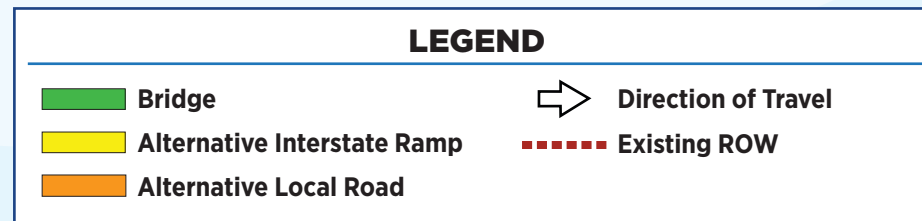
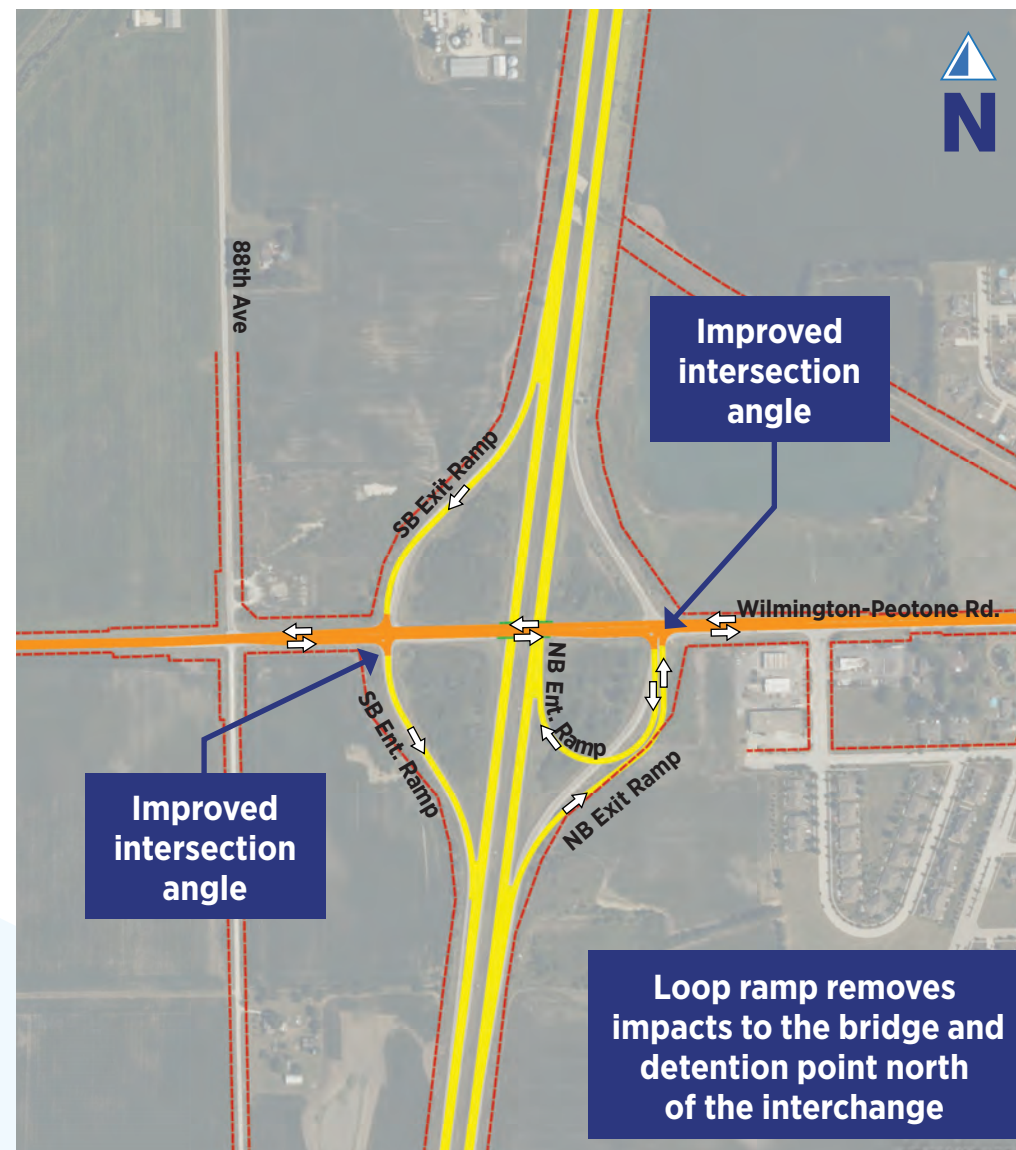


I-57 Interchange: Alternatives

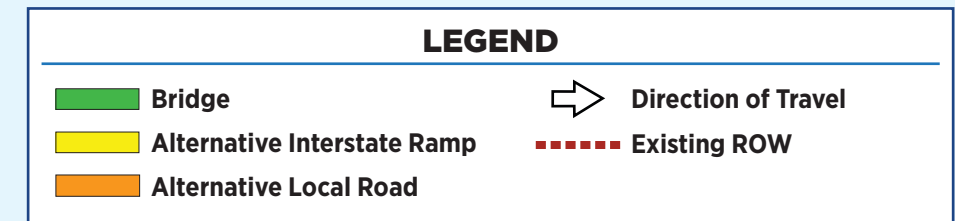
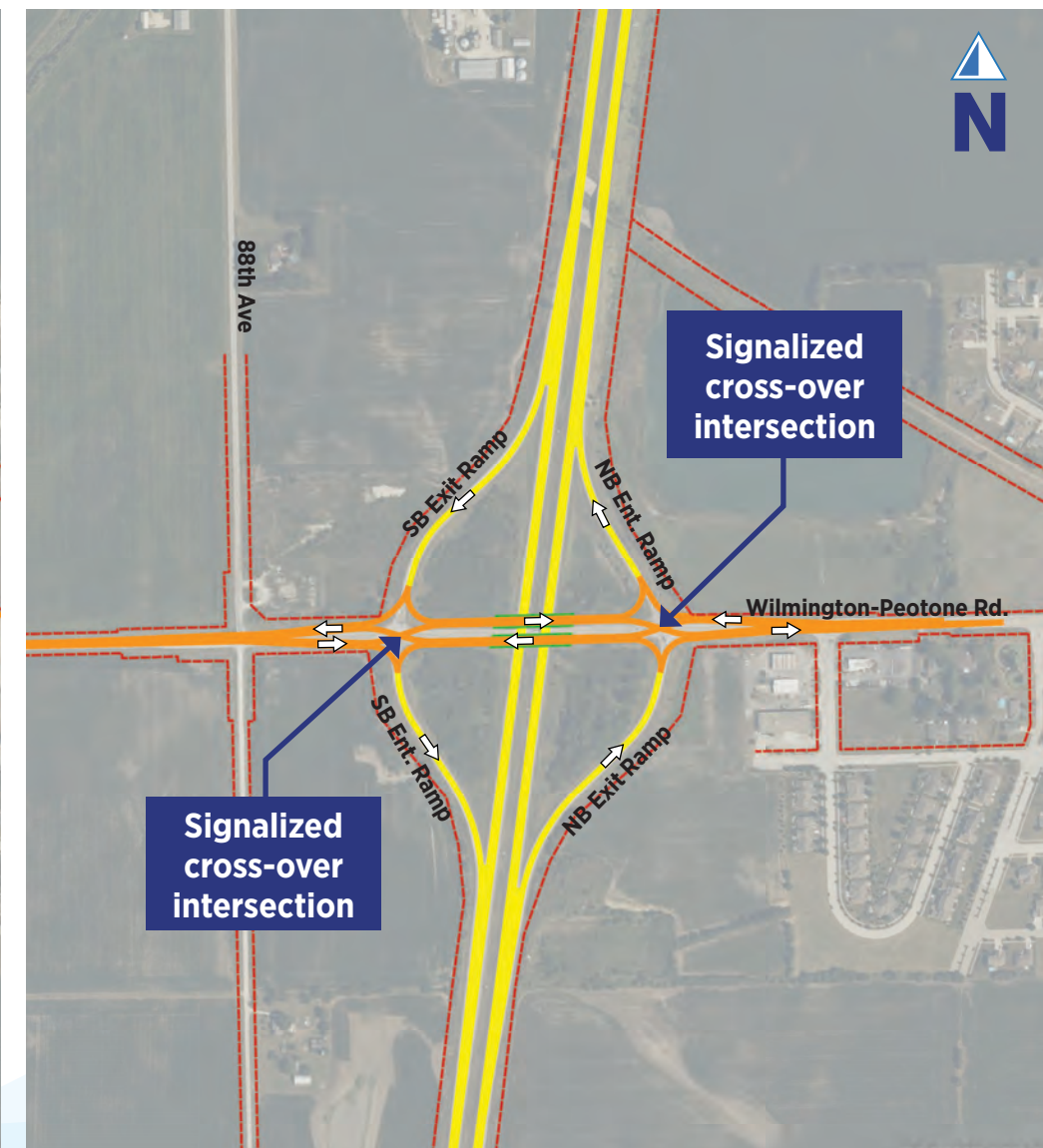
Alternative #1: Diamond



Alternative #2: Partial Cloverleaf



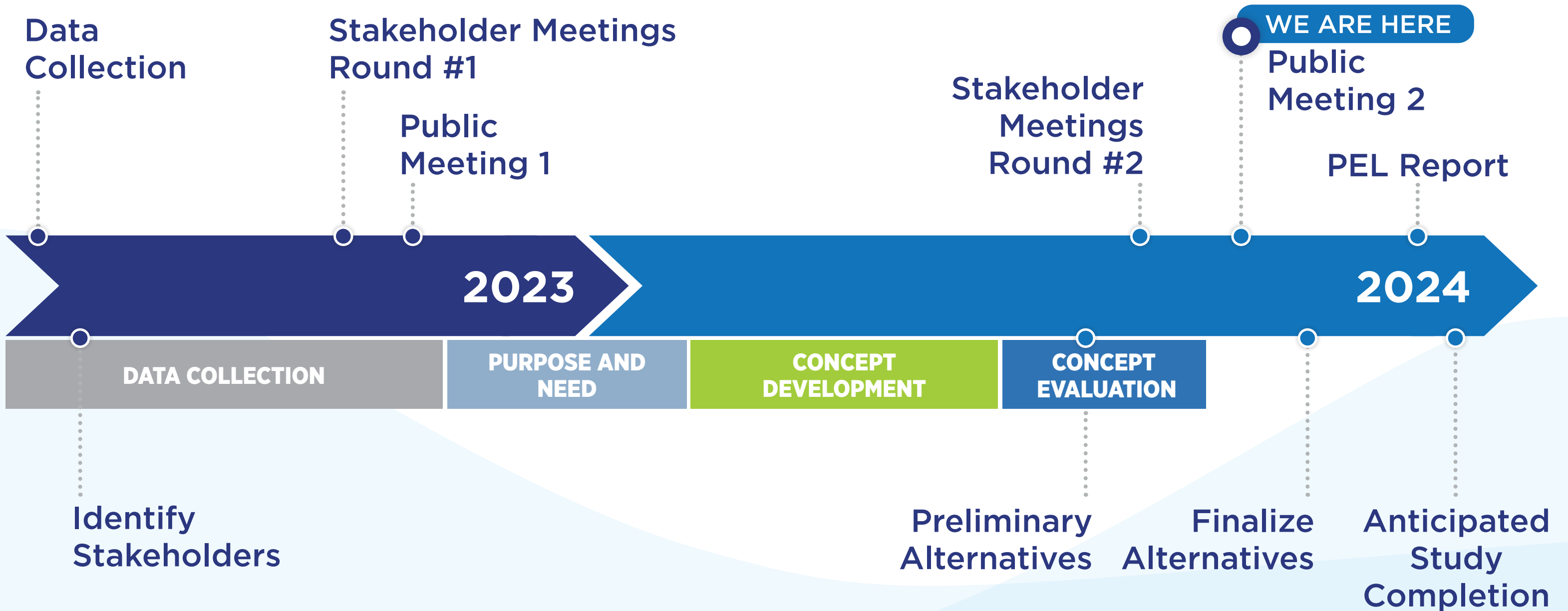
Alternative #3: Diverging Diamond



Project Development Process



PEL Study



Comments and Survey



COMMENTS DUE BY
NOVEMBER 6, 2024



COMMENT
FORM



WEBSITE

WWW.WILMINGTONPEOTONESTUDY.COM



PUBLIC MEETING #2

Thank you for joining us for the Wilmington-Peotone PEL Study Public Meeting #2. The Will County Division of Transportation (WCDOT) is performing a Planning and Environmental Linkages (PEL) study over approximately 22 miles along Wilmington-Peotone Road between Interstate 55 and Dreckler Road.



Based on your feedback and the data collection presented at Public Meeting #1 held in December of 2023, the Purpose and Need statement has been developed which will be used to identify the alternative that best meets the unique needs of the Wilmington-Peotone corridor. The Purpose and Need of the Wilmington-Peotone PEL study is:

Purpose

- ✓ Improve safety
- ✓ Enhance mobility for all users through providing an efficient east-west connection
- ✓ Support current and future travel demand throughout the corridor

Need

- ✓ Address deficiencies in the existing roadway and multi modal infrastructure
- ✓ Accommodate growth in local and regional traffic to improve mobility throughout the county

Alternative Evaluation

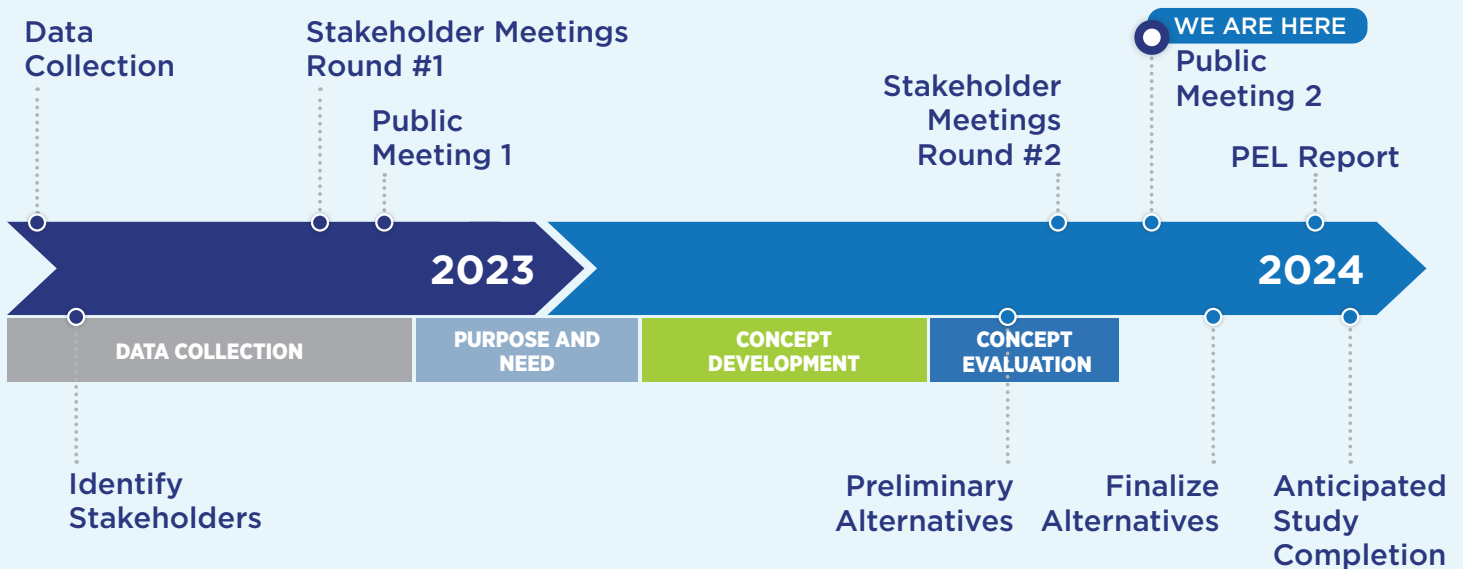
Using the Purpose and Need statement as a guide, Concept Alternatives have been developed showing potential improvements to address the concerns along the corridor. Improvements are broken up in to three categories:

- **SEGMENT IMPROVEMENTS:** Longitudinal improvements along the corridor to the typical sections, alignment, and/or profile
- **INTERSECTION IMPROVEMENTS:** Spot improvements at intersections to improve safety and operations.
- **INTERCHANGE IMPROVEMENTS:** Alternative to address the deficiencies at the existing I-55 and I-57 interchanges.



ACCESS
PUBLIC MEETING EXHIBITS
 showing the concept alternatives here

Project Schedule



YOUR INPUT IS IMPORTANT

We want to hear from you!

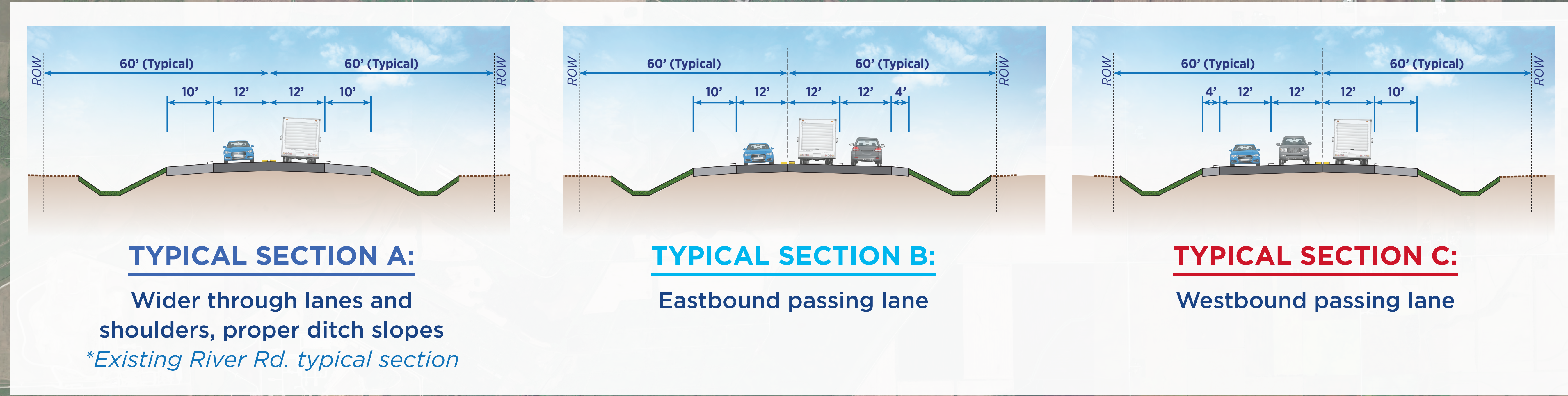


TAKE THE PUBLIC MEETING # 2 SURVEY



If you have questions regarding this project, please contact **Christina Kupkowski** by phone at (815) 727-8476 or email at ckupkowski@willcountyillinois.com

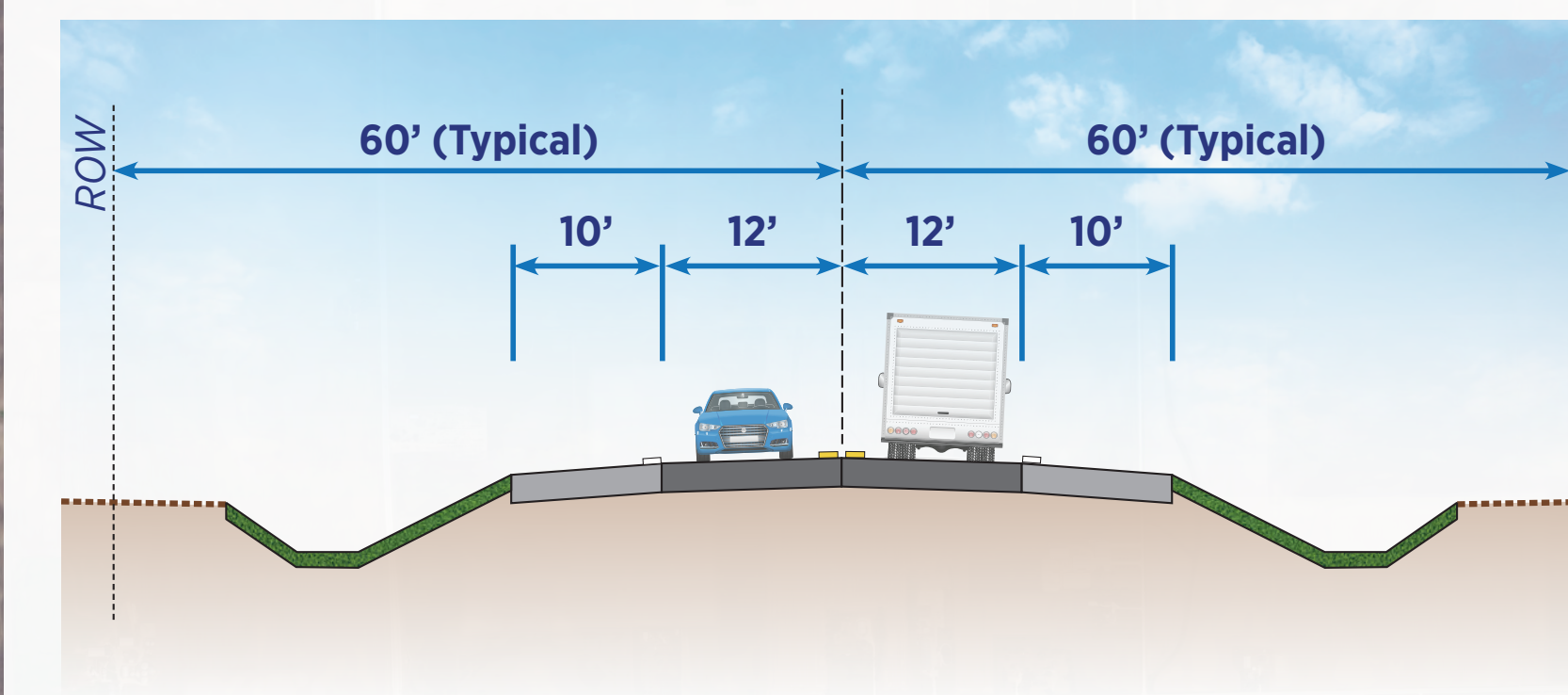
CONCEPTUAL EXHIBIT: SEGMENTS



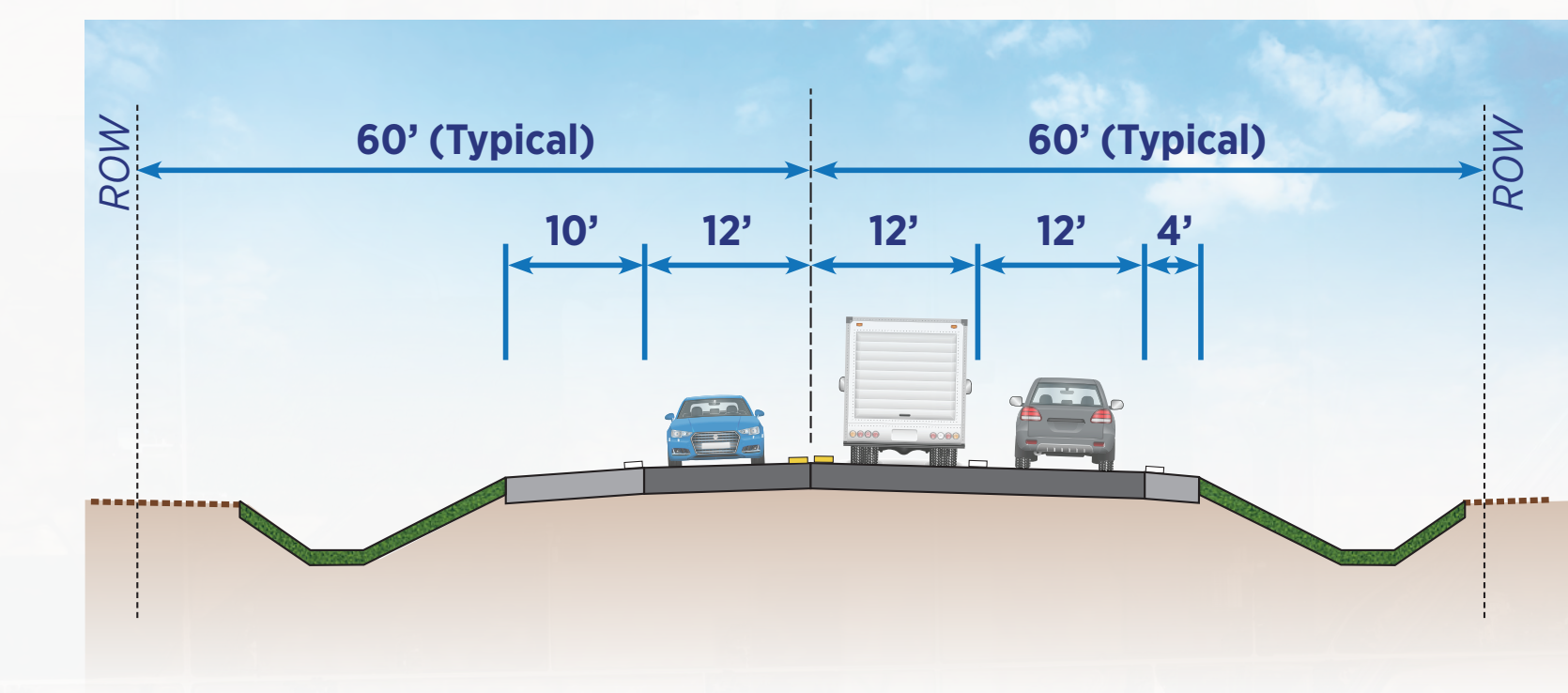
LEGEND

- Wilmington-Peotone PEL Study Corridor
- Corridor Realignment (Typical Section A)
- Bridge
- Standard Cross Section (Typical Section A)
- Passing lane (Typical Section B & C)
- Profile Improvement
- Railroad Grade Separation

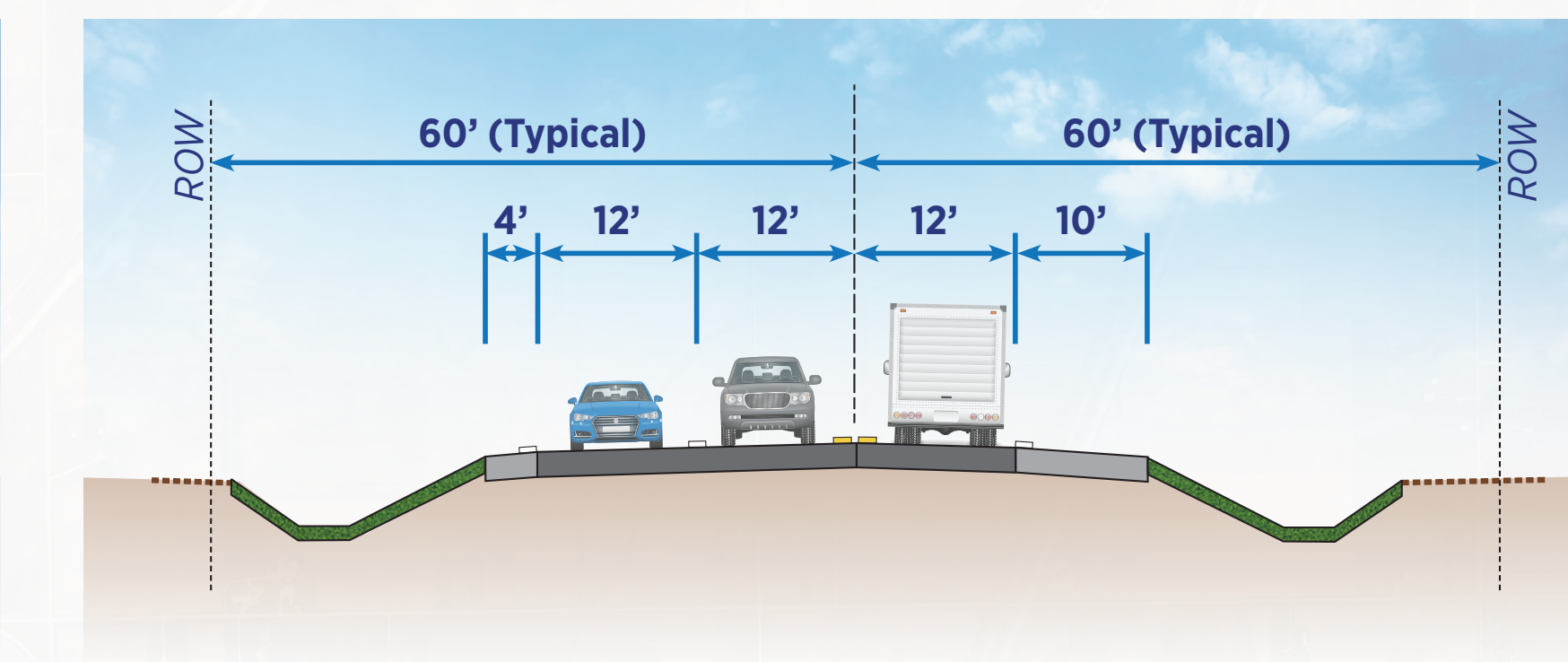
CONCEPTUAL EXHIBIT: SEGMENTS



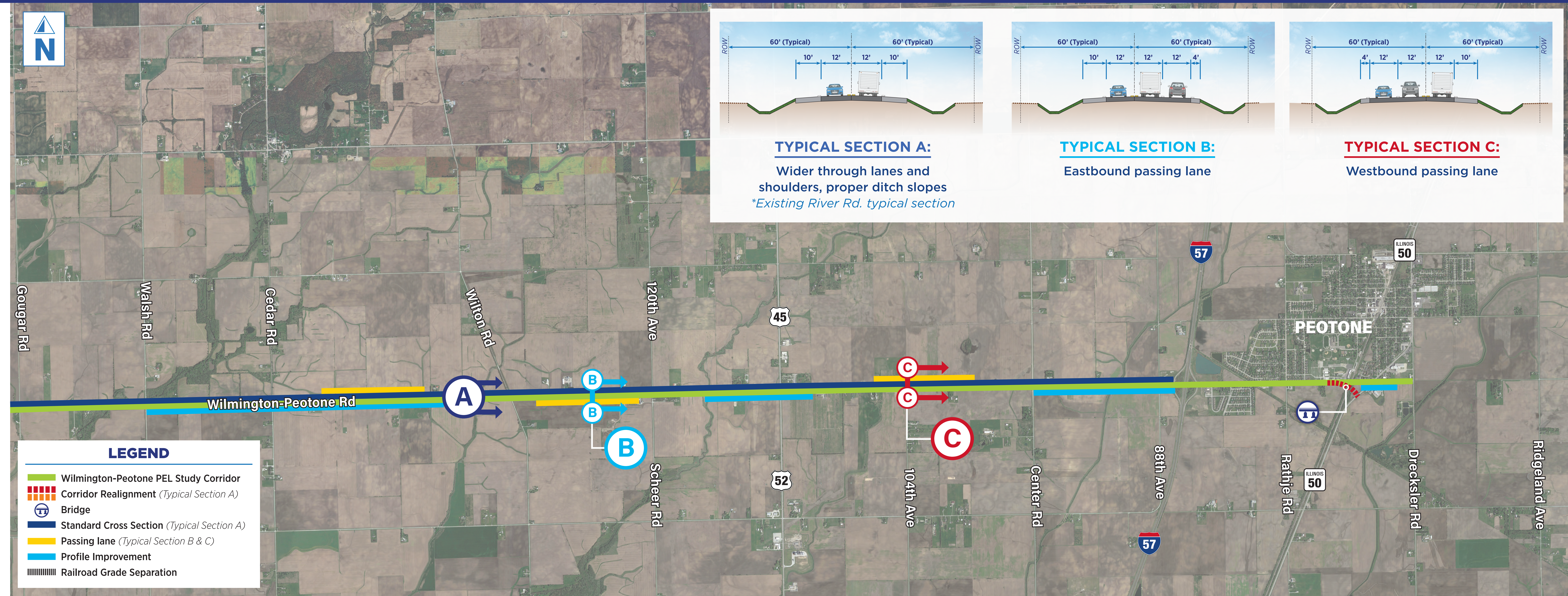
TYPICAL SECTION A:
 Wider through lanes and shoulders, proper ditch slopes
**Existing River Rd. typical section*



TYPICAL SECTION B:
 Eastbound passing lane



TYPICAL SECTION C:
 Westbound passing lane

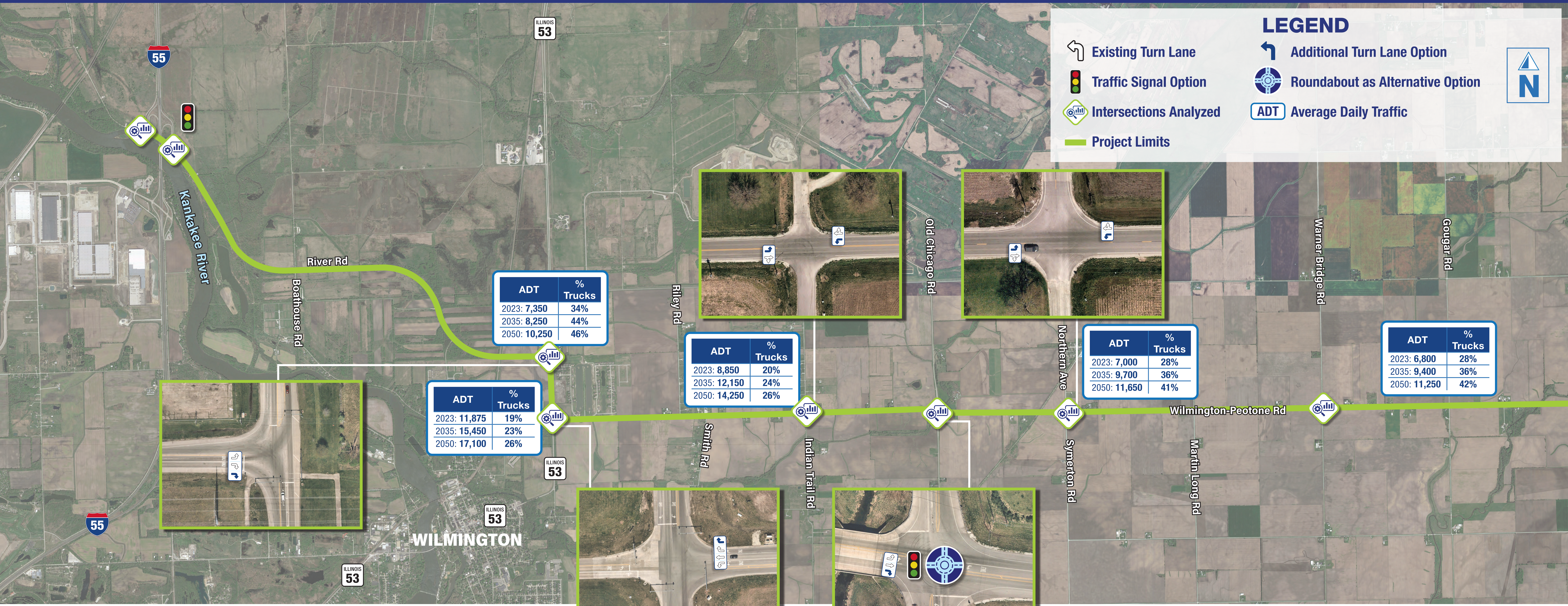


LEGEND

- █ Wilmington-Peotone PEL Study Corridor
- █ Corridor Realignment (Typical Section A)
- Bridge
- █ Standard Cross Section (Typical Section A)
- █ Passing lane (Typical Section B & C)
- █ Profile Improvement
- Railroad Grade Separation

LEGEND

- Existing Turn Lane
- Traffic Signal Option
- Intersections Analyzed
- Project Limits
- Additional Turn Lane Option
- Roundabout as Alternative Option
- ADT Average Daily Traffic

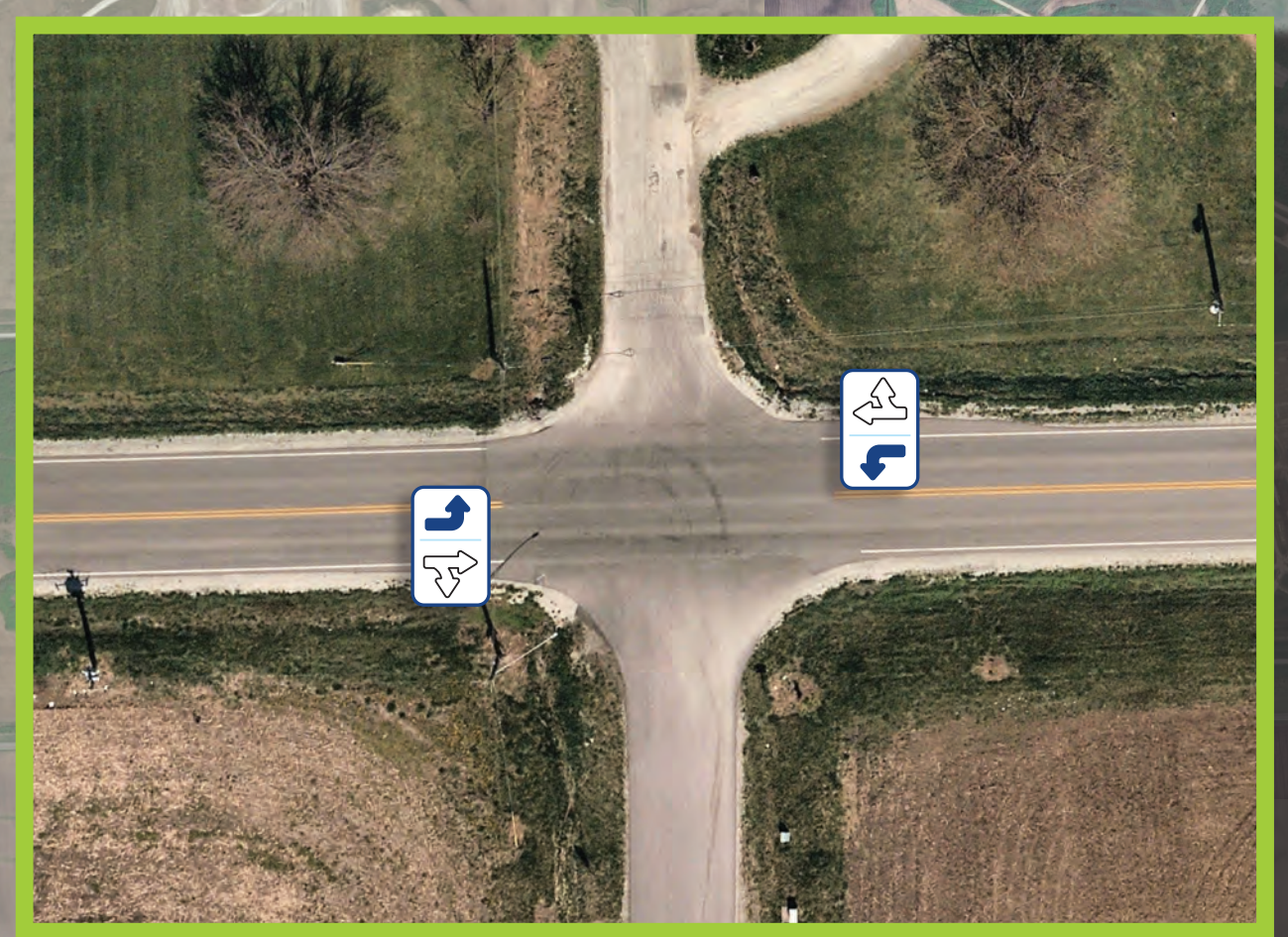
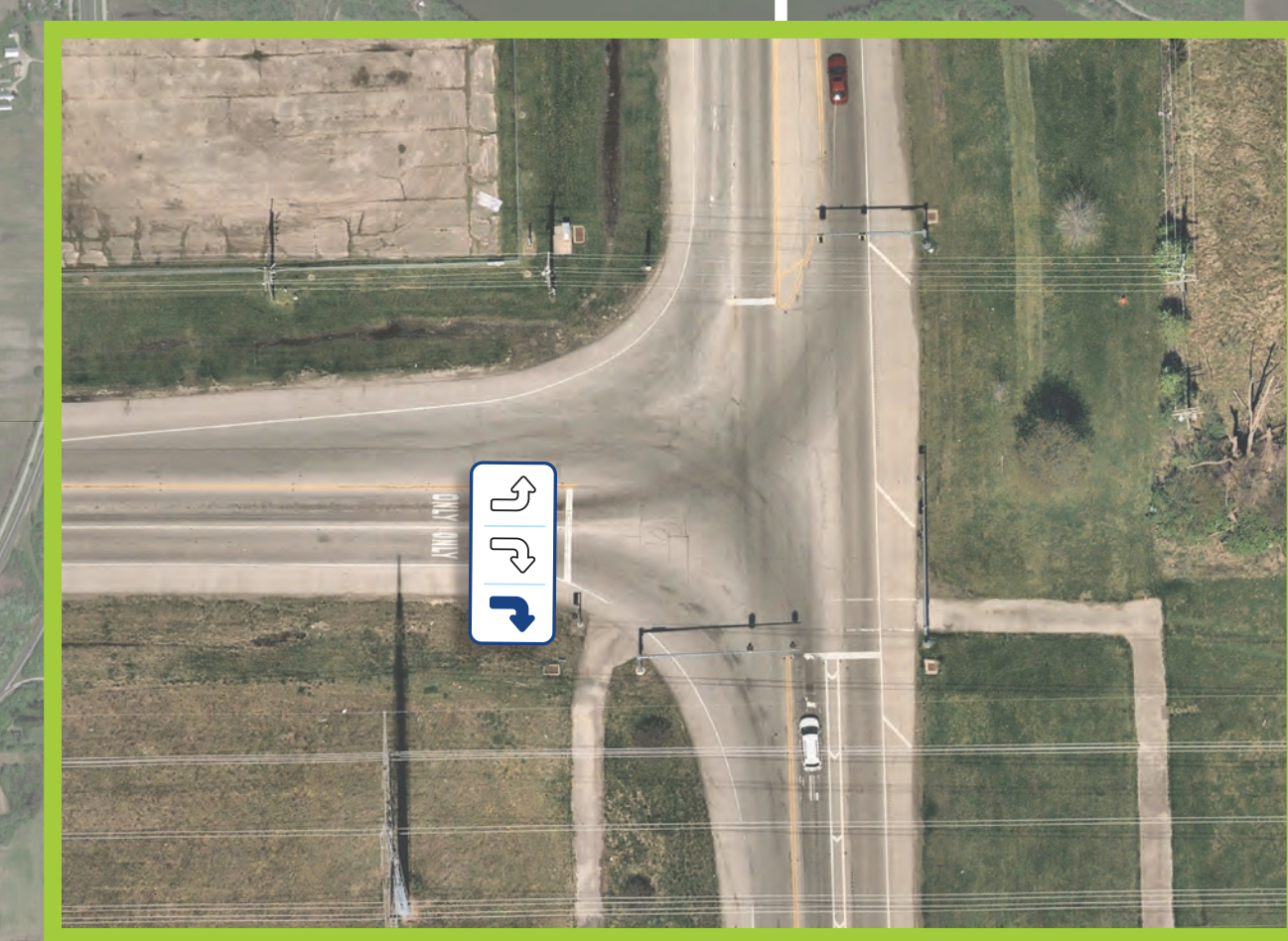
ADT	% Trucks
2023: 7,350	34%
2035: 8,250	44%
2050: 10,250	46%

ADT	% Trucks
2023: 8,850	20%
2035: 12,150	24%
2050: 14,250	26%

ADT	% Trucks
2023: 7,000	28%
2035: 9,700	36%
2050: 11,650	41%


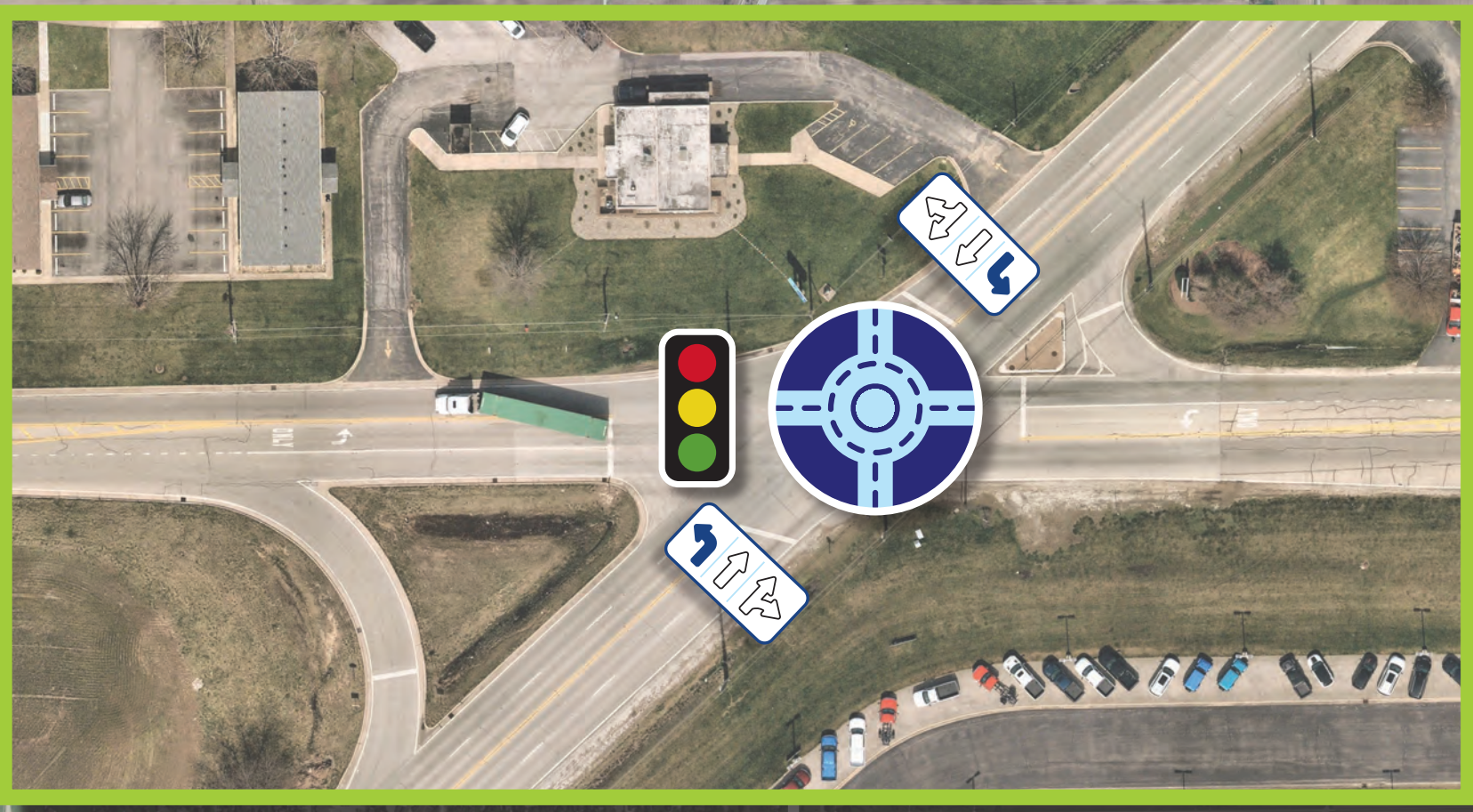
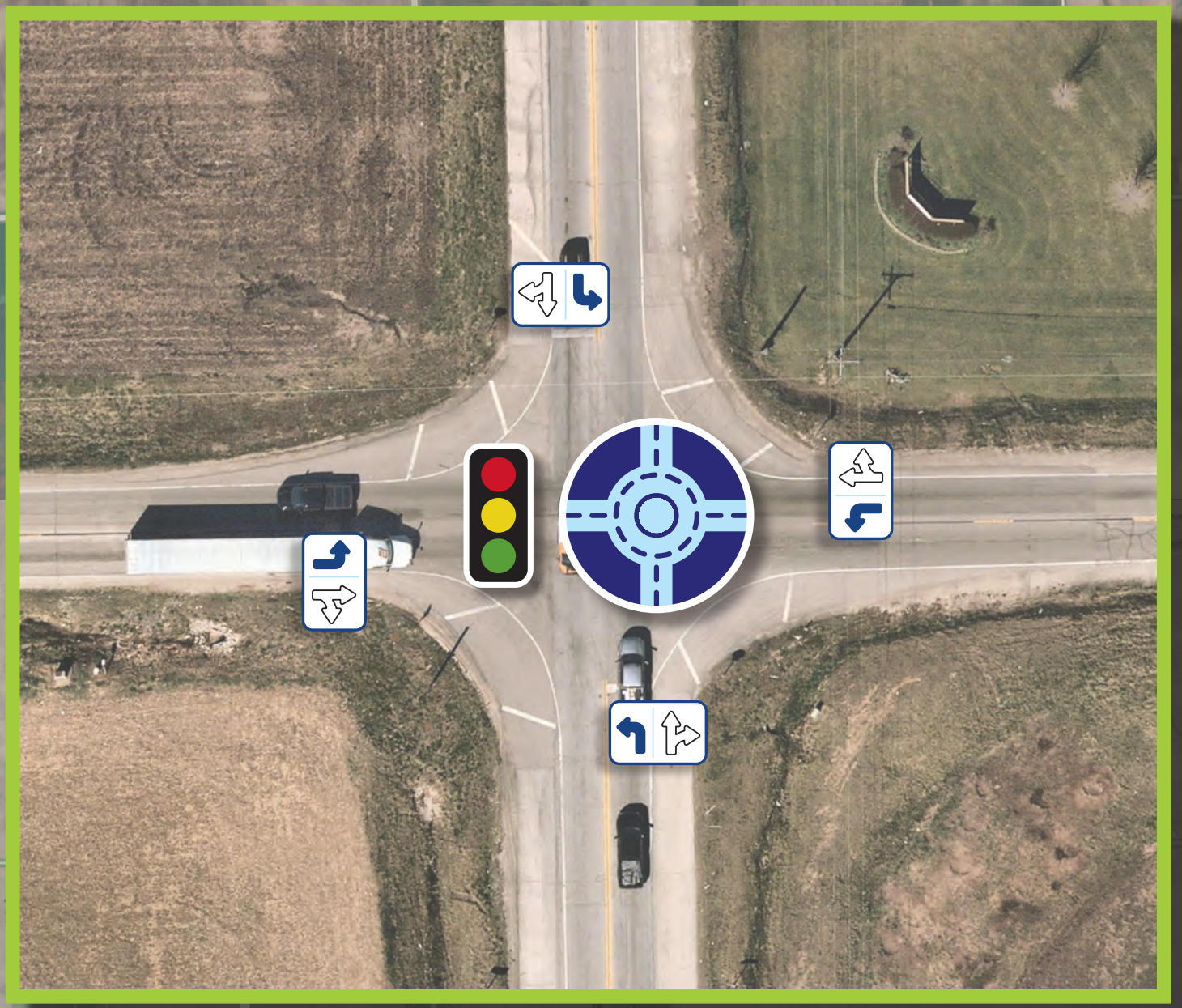
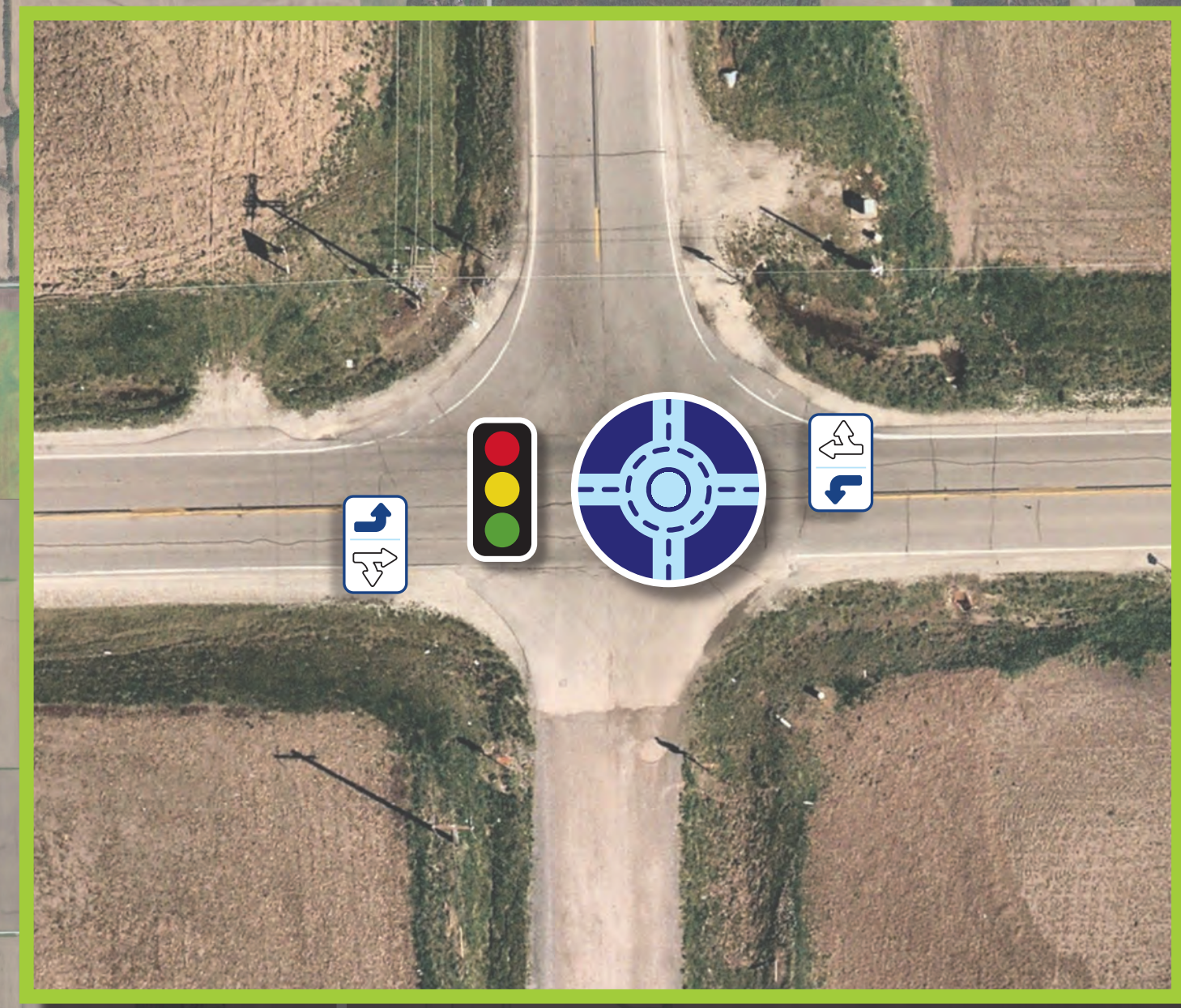
ADT	% Trucks
2023: 6,800	28%
2035: 9,400	36%
2050: 11,250	42%

ADT	% Trucks
2023: 11,875	19%
2035: 15,450	23%
2050: 17,100	26%



LEGEND

- Existing Turn Lane
- Traffic Signal Option
- Intersections Analyzed
- Project Limits
- Additional Turn Lane Option
- Roundabout as Alternative Option
- ADT Average Daily Traffic
- Crash

ADT	% Trucks
2023: 6,825	29%
2035: 8,820	30%
2050: 9,920	38%

ADT	% Trucks
2023: 5,350	31%
2035: 7,000	33%
2050: 8,075	41%

ADT	% Trucks
2023: 8,800	15%
2035: 10,210	19%
2050: 12,070	17%

Two recent fatal crashes. Additional signage has been added and further evaluation is underway

PEOTONE

